

For Research Use Only

CLEC12A Recombinant antibody, PBS Only (Capture)

Catalog Number: 83680-3-PBS



Basic Information

Catalog Number:

83680-3-PBS

Size:

1 mg/ml

Source:

Rabbit

Isotype:

IgG

GenBank Accession Number:

BC126291

GeneID (NCBI):

160364

UNIPROT ID:

Q5QGZ9

Full Name:

C-type lectin domain family 12, member A

Calculated MW:

31 kDa

Purification Method:

Protein A purification

CloneNo.:

240791B7

Applications

Tested Applications:

Cytometric bead array, Sandwich ELISA, Indirect ELISA, Sample test

Species Specificity:

human

Background Information

Storage

Storage:

Store at -80°C.

The product is shipped with ice packs. Upon receipt, store it immediately at -80°C

Storage Buffer:

PBS Only

For technical support and original validation data for this product please contact:

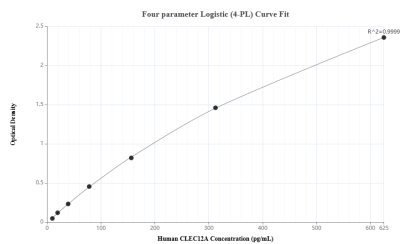
T: 4006900926

E: Proteintech-CN@ptglab.com

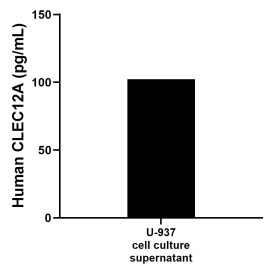
W: ptgcn.com

This product is exclusively available under Proteintech Group brand and is not available to purchase from any other manufacturer.

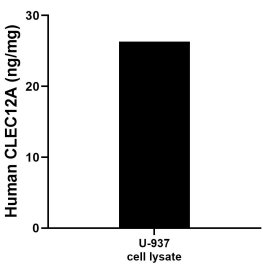
Selected Validation Data



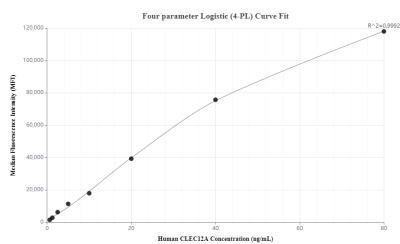
Sandwich ELISA standard curve of MP00662-4, Human CLEC12A Recombinant Matched Antibody Pair - PBS only. 83680-3-PBS was coated to a plate as the capture antibody and incubated with serial dilutions of standard Eg0024. 83680-6-PBS was HRP conjugated as the detection antibody. Range: 9.8-625 pg/mL



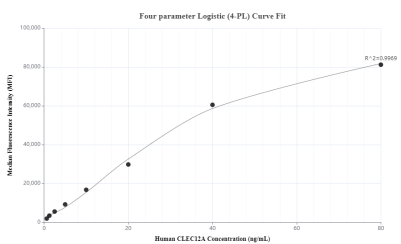
U-937 human histiocytic lymphoma cells were cultured in RPMI supplemented with 10% fetal bovine serum and 2 mM L-glutamine, and incubated at 37 °C. An aliquot of the cell culture supernate was removed, assayed for human CLEC12A, and measured 102.2 pg/mL



U-937 cell lysate was measured. The human CLEC12A concentration was determined to be 26.30 ng/mg total protein.



Cytometric bead array standard curve of MP00662-1, CLEC12A Recombinant Matched Antibody Pair, PBS Only. Capture antibody: 83680-3-PBS. Detection antibody: 83680-2-PBS. Standard: Eg0024. Range: 0.625-80 ng/mL



Cytometric bead array standard curve of MP00662-3, CLEC12A Recombinant Matched Antibody Pair, PBS Only. Capture antibody: 83680-3-PBS. Detection antibody: 83680-1-PBS. Standard: Eg0024. Range: 0.625-80 ng/mL