

For Research Use Only

# B2M Recombinant antibody, PBS Only



Catalog Number: 83683-6-PBS

## Basic Information

|  |  |   |
|--|--|---|
| <b>Catalog Number:</b><br>83683-6-PBS      | <b>GenBank Accession Number:</b><br>BC032589 | <b>Purification Method:</b><br>Protein A purification |
| <b>Size:</b><br>1 mg/ml                    | <b>GeneID (NCBI):</b><br>567                 | <b>CloneNo.:</b><br>240660A12                         |
| <b>Source:</b><br>Rabbit                   | <b>ENSEMBL Gene ID:</b><br>ENSG00000166710   |   |
| <b>Isotype:</b><br>IgG                     | <b>UNIPROT ID:</b><br>P61769                 |   |
| <b>Immunogen Catalog Number:</b><br>AG4433 | <b>Full Name:</b><br>beta-2-microglobulin    |   |
|  | <b>Calculated MW:</b><br>119 aa, 14 kDa      |   |

## Applications

**Tested Applications:**  
WB, ELISA

**Species Specificity:**  
human

## Background Information

### Storage

**Storage:**  
Store at -80°C.  
**The product is shipped with ice packs. Upon receipt, store it immediately at -80°C**

**Storage Buffer:**  
PBS Only

For technical support and original validation data for this product please contact:

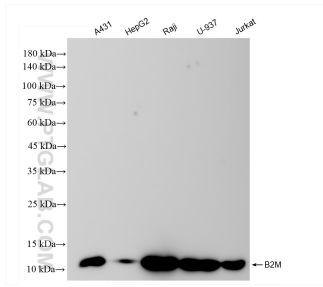
T: 4006900926

E: Proteintech-CN@ptglab.com

W: ptgcn.com

**This product is exclusively available under Proteintech Group brand and is not available to purchase from any other manufacturer.**

## Selected Validation Data



Various lysates were subjected to SDS PAGE followed by western blot with 83683-6-RR (Beta-2-Microglobulin antibody) at dilution of 1:10000 incubated at room temperature for 1.5 hours. This data was developed using the same antibody clone with 83683-6-PBS in a different storage buffer formulation.