

For Research Use Only

# Beta-2-Microglobulin Recombinant antibody



Catalog Number: 83683-6-RR

## Basic Information

Catalog Number:

83683-6-RR

Size:

1000  $\mu$ g/ml

Source:

Rabbit

Isotype:

IgG

Immunogen Catalog Number:

AG4433

GenBank Accession Number:

BC032589

GeneID (NCBI):

567

ENSEMBL Gene ID:

ENSG00000166710

UNIPROT ID:

P61769

Full Name:

beta-2-microglobulin

Calculated MW:

119 aa, 14 kDa

Observed MW:

12 kDa

Purification Method:

Protein A purification

CloneNo.:

240660A12

Recommended Dilutions:

WB 1:5000-1:50000

IP 0.5-4.0  $\mu$ g for 1.0-3.0 mg of total protein lysate

## Applications

Tested Applications:

WB, IP, ELISA

Species Specificity:

human

Positive Controls:

WB: A431 cells, HepG2 cells, Raji cells, U-937 cells, Jurkat cells

IP: A431 cells,

## Background Information

Beta-2-microglobulin (B2M) is a component of MHC class I molecules, which are present on the surface of nearly all nucleated cells. It can be found in body fluids under physiologic conditions due to shedding from cell surfaces or intracellular release. B2M has various biological functions, including antigen presentation. Investigations reveal that increased synthesis and release of B2M are present in several malignant diseases.

## Storage

Storage:

Store at -20°C. Stable for one year after shipment.

Storage Buffer:

PBS with 0.02% sodium azide and 50% glycerol pH 7.3.

Aliquoting is unnecessary for -20°C storage

For technical support and original validation data for this product please contact:

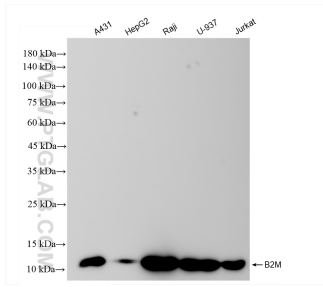
T: 4006900926

E: [Proteintech-CN@ptglab.com](mailto:Proteintech-CN@ptglab.com)

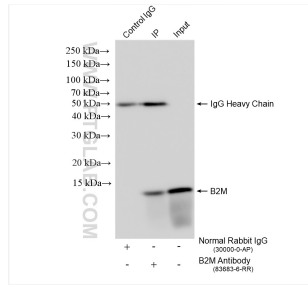
W: [ptgcn.com](http://ptgcn.com)

This product is exclusively available under Proteintech Group brand and is not available to purchase from any other manufacturer.

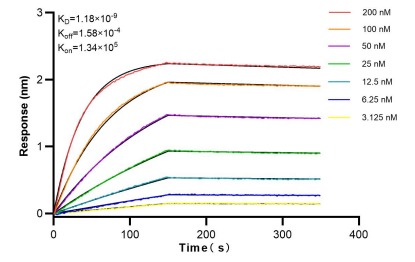
## Selected Validation Data



Various lysates were subjected to SDS PAGE followed by western blot with 83683-6-RR (Beta-2-Microglobulin antibody) at dilution of 1:10000 incubated at room temperature for 1.5 hours.



IP result of anti-Beta-2-Microglobulin (IP:83683-6-RR, 4 $\mu$ g; Detection:83683-6-RR 1:3000) with A431 cells lysate 2180  $\mu$ g.



Bi-layer interferometry (BLI) kinetic assays of 83683-6-RR against Human Beta-2-Microglobulin were performed. The affinity constant is 1.18 nM.