

For Research Use Only

HSP47/SERPINH1 Recombinant antibody

Catalog Number:83689-4-RR



Basic Information

Catalog Number: 83689-4-RR	GenBank Accession Number: NM_001235.5	Purification Method: Protein A purification
Size: 1000 ug/ml	GeneID (NCBI): 871	CloneNo.: 240752F2
Source: Rabbit	UNIPROT ID: P50454	Recommended Dilutions: WB 1:5000-1:50000 IHC 1:50-1:500 IF/ICC 1:125-1:500
Isotype: IgG	Full Name: serpin peptidase inhibitor, clade H (heat shock protein 47), member 1, (collagen binding protein 1)	
	Calculated MW: 46kDa	
	Observed MW: 46 kDa	

Applications

Tested Applications: WB, IHC, IF/ICC, ELISA	Positive Controls:
Species Specificity: human, mouse	WB: A2780 cells, HeLa cells, A549 cells, HT-1080 cells, MCF-7 cells, HepG2 cells, NIH/3T3 cells
Note-IHC: suggested antigen retrieval with TE buffer pH 9.0; (*) Alternatively, antigen retrieval may be performed with citrate buffer pH 6.0	IHC: human ovarian cancer, IF/ICC: HeLa cells,

Background Information

HSP47 is also named as Serpin H1, colligen, CBP1, CBP2, HSP47, SERPINH2 and belongs to the serpin family. This gene encodes a member of the serpin superfamily of serine proteinase inhibitors. The encoded protein is localized to the endoplasmic reticulum. It binds specifically to collagen and can be involved as a chaperone in the biosynthetic pathway of collagen. Autoantibodies to the encoded protein have been found in patients with rheumatoid arthritis. HSP47 has a calculated molecular weight of 46 kDa.

Storage

Storage:
Store at -20°C. Stable for one year after shipment.
Storage Buffer:
PBS with 0.02% sodium azide and 50% glycerol pH 7.3.
Aliquoting is unnecessary for -20°C storage

For technical support and original validation data for this product please contact:

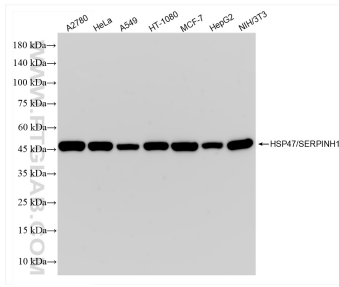
T: 4006900926

E: Proteintech-CN@ptglab.com

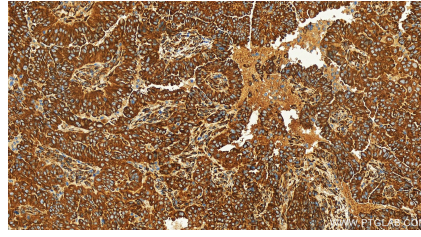
W: ptgcn.com

This product is exclusively available under Proteintech Group brand and is not available to purchase from any other manufacturer.

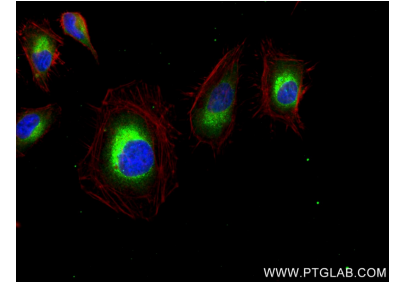
Selected Validation Data



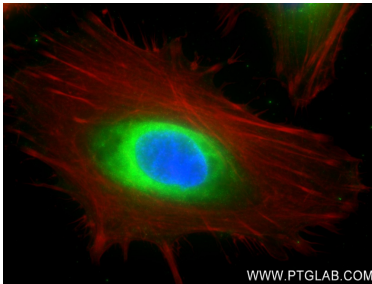
Various lysates were subjected to SDS PAGE followed by western blot with 83689-4-RR (HSP47/SERPINH1 antibody) at dilution of 1:10000 incubated at room temperature for 1.5 hours.



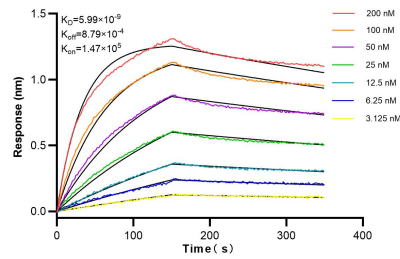
Immunohistochemical analysis of paraffin-embedded human ovarian cancer slide using 83689-4-RR (HSP47/SERPINH1 antibody) at dilution of 1:200 (under 20x lens). Heat mediated antigen retrieval with Tris-EDTA buffer (pH 9.0).



Immunofluorescent analysis of (4% PFA) fixed HeLa cells using HSP47/SERPINH1 antibody (83689-4-RR, Clone: 240752F2) at dilution of 1:250 and Coralite®488-Conjugated AffiniPure Goat Anti-Rabbit IgG(H+L) (SA00013-2), CL594-Phalloidin (red).



Immunofluorescent analysis of (4% PFA) fixed HeLa cells using HSP47/SERPINH1 antibody (83689-4-RR, Clone: 240752F2) at dilution of 1:250 and Coralite®488-Conjugated AffiniPure Goat Anti-Rabbit IgG(H+L) (SA00013-2), CL594-Phalloidin (red).



Biolayer interferometry (BLI) kinetic assays of 83689-4-RR against Human HSP47/SERPINH1 were performed. The affinity constant is 5.99 nM.