

For Research Use Only

MARS Recombinant antibody, PBS Only (Capture)

Catalog Number:83690-4-PBS



Basic Information

Catalog Number: 83690-4-PBS	GenBank Accession Number: BC002384	Purification Method: Protein A purification
Size: 1 mg/ml	GeneID (NCBI): 4141	CloneNo.: 240648G4
Source: Rabbit	UNIPROT ID: P56192	
Isotype: IgG	Full Name: methionyl-tRNA synthetase	
Immunogen Catalog Number: AG6619	Calculated MW: 101 kDa	

Applications

Tested Applications:
WB, IF/ICC, Cytometric bead array, Sandwich ELISA,
Indirect ELISA, Sample test

Species Specificity:
human, mouse, rat

Background Information

Storage

Storage:
Store at -80°C.
The product is shipped with ice packs. Upon receipt, store it immediately at -80°C
Storage Buffer:
PBS Only

For technical support and original validation data for this product please contact:

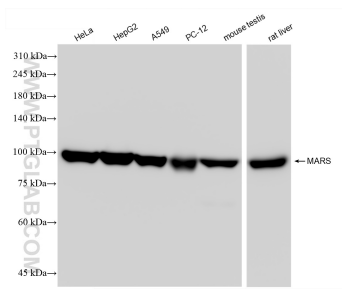
T: 4006900926

E: Proteintech-CN@ptglab.com

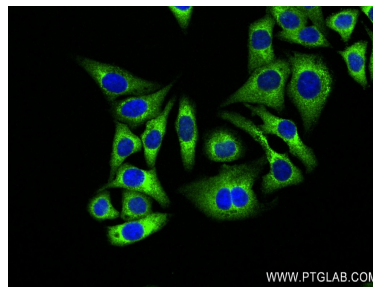
W: ptgcn.com

This product is exclusively available under Proteintech Group brand and is not available to purchase from any other manufacturer.

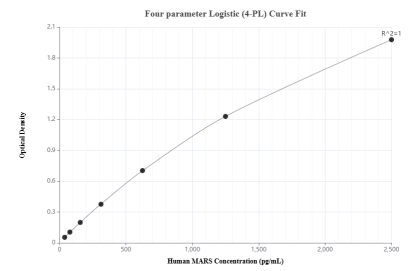
Selected Validation Data



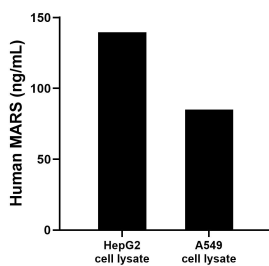
Various lysates were subjected to SDS PAGE followed by western blot with 83690-4-RR (MARS antibody) at dilution of 1:8000 incubated at room temperature for 1.5 hours. This data was developed using the same antibody clone with 83690-4-PBS in a different storage buffer formulation.



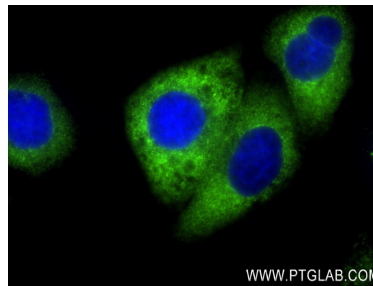
Immunofluorescent analysis of (4% PFA) fixed HepG2 cells using MARS antibody (83690-4-RR, Clone: 240648G4) at dilution of 1:250 and CoraLite®488-Conjugated AffiniPure Goat Anti-Rabbit IgG(H+L) (SA00013-2). This data was developed using the same antibody clone with 83690-4-PBS in a different storage buffer formulation.



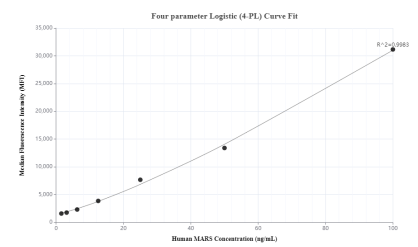
Sandwich ELISA standard curve of MP00679-1, Human MARS Recombinant Matched Antibody Pair - PBS only. 83690-4-PBS was coated to a plate as the capture antibody and incubated with serial dilutions of standard Ag6619. 83690-3-PBS was HRP conjugated as the detection antibody. Range: 39.1-2500 pg/mL



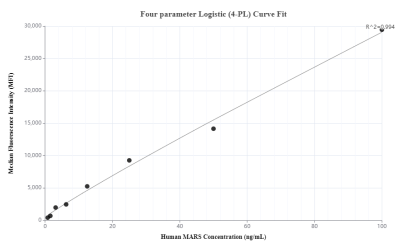
HepG2 and A549 cell lysates were measured. The human MARS concentration of detected samples was determined to be 139.60 ng/mL (based on a 3.00 mg/mL extract load) in HepG2 cell lysate and 85.10 ng/mL (based on a 3.00 mg/mL extract load) in A549 cell lysate.



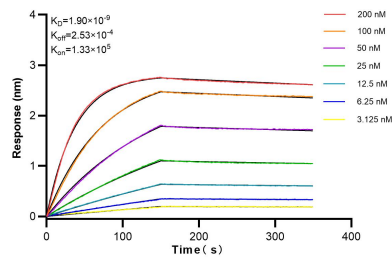
Immunofluorescent analysis of (4% PFA) fixed HepG2 cells using MARS antibody (83690-4-RR, Clone: 240648G4) at dilution of 1:250 and CoraLite®488-Conjugated AffiniPure Goat Anti-Rabbit IgG(H+L) (SA00013-2). This data was developed using the same antibody clone with 83690-4-PBS in a different storage buffer formulation.



Cytometric bead array standard curve of MP00679-1, MARS Recombinant Matched Antibody Pair, PBS Only. Capture antibody: 83690-4-PBS. Detection antibody: 83690-3-PBS. Standard: Ag6619. Range: 1.56-100 ng/mL



Cytometric bead array standard curve of MP00679-2, MARS Recombinant Matched Antibody Pair, PBS Only. Capture antibody: 83690-4-PBS. Detection antibody: 83690-2-PBS. Standard: Ag6619. Range: 0.78-100 ng/mL



Biolayer interferometry (BLI) kinetic assays of 83690-4-RR against Human MARS were performed. The affinity constant is 1.90 nM.