

For Research Use Only

ASGR1 Recombinant antibody, PBS Only (Detector)



Catalog Number: 83691-3-PBS

Basic Information

Catalog Number: 83691-3-PBS	GenBank Accession Number: NM_001671.4	Purification Method: Protein A purification
Size: 1 mg/ml	GeneID (NCBI): 432	CloneNo.: 240672C4
Source: Rabbit	UNIPROT ID: P07306-1	
Isotype: IgG	Full Name: asialoglycoprotein receptor 1	
	Calculated MW: 33 kDa	

Applications

Tested Applications:
WB, Cytometric bead array, Sandwich ELISA, Indirect ELISA, Sample test

Species Specificity:
human, rat

Background Information

Storage

Storage:
Store at -80°C.
The product is shipped with ice packs. Upon receipt, store it immediately at -80°C
Storage Buffer:
PBS Only

For technical support and original validation data for this product please contact:

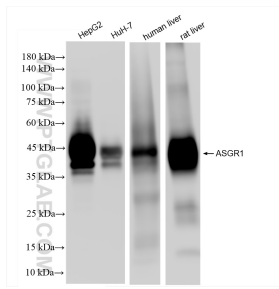
T: 4006900926

E: Proteintech-CN@ptglab.com

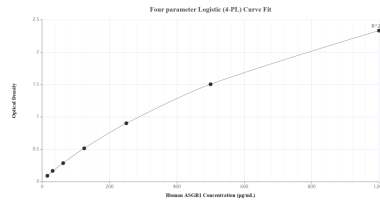
W: ptgcn.com

This product is exclusively available under Proteintech Group brand and is not available to purchase from any other manufacturer.

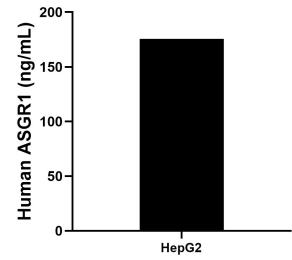
Selected Validation Data



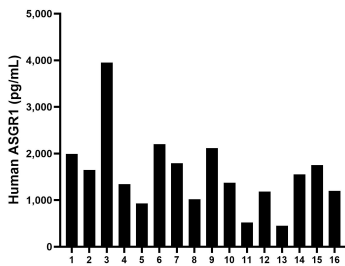
Various lysates were subjected to SDS PAGE followed by western blot with 83691-3-RR (ASGR1 antibody) at dilution of 1:2000 incubated at room temperature for 1.5 hours. This data was developed using the same antibody clone with 83691-3-PBS in a different storage buffer formulation.



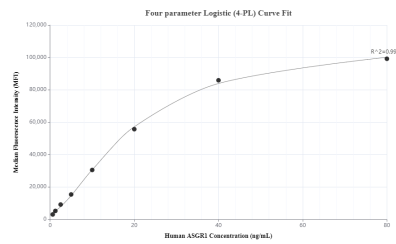
Sandwich ELISA standard curve of MP00681-3, Human ASGR1 Recombinant Matched Antibody Pair - PBS only. 83691-1-PBS was coated to a plate as the capture antibody and incubated with serial dilutions of standard Eg0946. 83691-3-PBS was HRP conjugated as the detection antibody. Range: 7.8-1000 pg/mL.



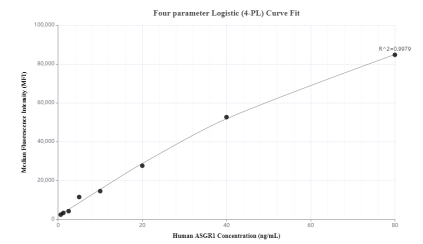
The mean human ASGR1 concentration was determined to be 175.6 ng/mL in HepG2 cell extract based on a 3.7 mg/mL extract load.



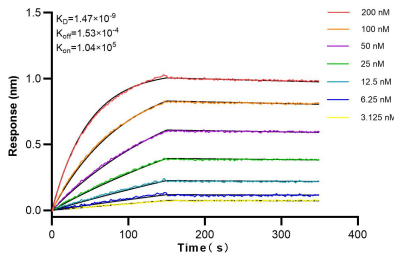
Serum of sixteen individual healthy human donors was measured. The ASGR1 concentration of detected samples was determined to be 1,563.4 pg/mL with a range of 450.5-3,950.7 pg/mL.



Cytometric bead array standard curve of MP00681-1, ASGR1 Recombinant Matched Antibody Pair, PBS Only. Capture antibody: 83691-2-PBS. Detection antibody: 83691-3-PBS. Standard: Eg0946. Range: 0.625-80 ng/mL.



Cytometric bead array standard curve of MP00681-3, ASGR1 Recombinant Matched Antibody Pair, PBS Only. Capture antibody: 83691-1-PBS. Detection antibody: 83691-3-PBS. Standard: Eg0946. Range: 0.625-80 ng/mL.



Biolayer interferometry (BLI) kinetic assays of 83691-3-RR against Human ASGR1 were performed. The affinity constant is 1.47 nM.