

For Research Use Only

Rat SCF Recombinant antibody, PBS Only (Detector)

Catalog Number:83707-2-PBS



Basic Information

Catalog Number: 83707-2-PBS	GenBank Accession Number: NM_021843.4	Purification Method: Protein A purification
Size: 1 mg/ml	GeneID (NCBI): 60427	CloneNo.: 240787H1
Source: Rabbit	UNIPROT ID: P21581-1	
Isotype: IgG	Full Name: KIT ligand	
	Calculated MW: 31kDa	
	Observed MW: 28 kDa, 45 kDa	

Applications

Tested Applications:
WB, Cytometric bead array, Sandwich ELISA, Indirect ELISA, Sample test

Species Specificity:
human, mouse, rat

Background Information

Stem cell factor (SCF) also known as mast cell growth factor, steel factor, and kit ligand, is a hematopoietic growth factor. SCF is a critical protein with key roles in the cell such as hematopoiesis, gametogenesis and melanogenesis. SCF activates multiple signal pathways by binding with c-kit receptor. SCF and its receptor, c-kit ligand (KL), are up-regulated in particular human malignancies including gastrointestinal stromal tumor (GISTs), breast cancer, hematopoietic cell, myeloid leukaemia, and glioma. The SCF/c-KIT system also plays a relevant role in cell fate decision, and its activity is widely known to control cell proliferation, differentiation, survival and apoptosis. SCF is a 35 to 45 kDa monomeric glycoprotein.

Storage

Storage:
Store at -80°C.
The product is shipped with ice packs. Upon receipt, store it immediately at -80°C

Storage Buffer:
PBS Only

For technical support and original validation data for this product please contact:

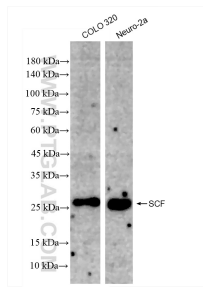
T: 4006900926

E: Proteintech-CN@ptglab.com

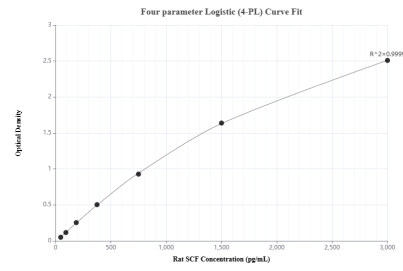
W: ptgcn.com

This product is exclusively available under Proteintech Group brand and is not available to purchase from any other manufacturer.

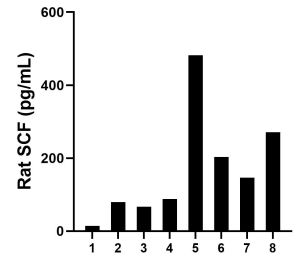
Selected Validation Data



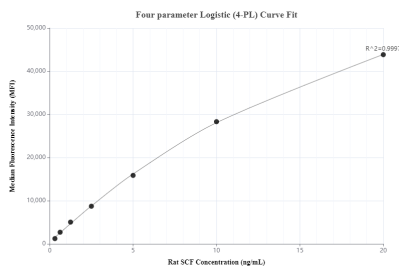
Various lysates were subjected to SDS PAGE followed by western blot with 83707-2-RR (SCF antibody) at dilution of 1:10000 incubated at room temperature for 1.5 hours. This data was developed using the same antibody clone with 83707-2-PBS in a different storage buffer formulation.



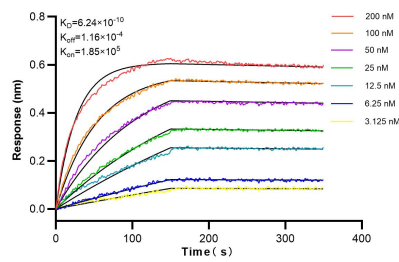
Sandwich ELISA standard curve of MP00664-1, Rat SCF Recombinant Matched Antibody Pair - PBS only. 83707-1-PBS was coated to a plate as the capture antibody and incubated with serial dilutions of standard Eg1092. 83707-2-PBS was HRP conjugated as the detection antibody. Range: 46.9-3000 pg/mL



Serum of eight rats was measured. The rat SCF concentration of detected samples was determined to be 191.0 pg/mL with a range of 14.0 - 481.6 pg/mL.



Cytometric bead array standard curve of MP00664-1, RAT SCF Recombinant Matched Antibody Pair, PBS Only. Capture antibody: 83707-1-PBS. Detection antibody: 83707-2-PBS. Standard: Eg1092. Range: 0.313-20 ng/mL



Biolayer interferometry (BLI) kinetic assays of 83707-2-RR against Rat SCF were performed. The affinity constant is 0.624 nM.