

For Research Use Only

RAP1A Recombinant antibody

Catalog Number: 83708-2-RR



Basic Information

Catalog Number: 83708-2-RR	GenBank Accession Number: BC014086	Purification Method: Protein A purification
Size: 1000 µg/ml	GeneID (NCBI): 5906	CloneNo.: 240438E10
Source: Rabbit	UNIPROT ID: P62834	Recommended Dilutions: WB 1:5000-1:50000
Isotype: IgG	Full Name: RAP1A, member of RAS oncogene family	
Immunogen Catalog Number: AG9488	Calculated MW: 184 aa, 21 kDa	
	Observed MW: 21 kDa	

Applications

Tested Applications:
WB, FC (Intra), ELISA

Species Specificity:
human, mouse, rat

Positive Controls:
WB : NIH/3T3 cells, A431 cells, HeLa cells, K-562 cells, human platelet tissue, rat brain tissue

Background Information

RAP1A(Ras-related protein Rap-1A), also known as KREV1. Induces morphological reversion of a cell line transformed by a Ras oncogene. The biological roles of RAP1A include inducing neurite outgrowth and embryonic angiogenesis(PMID: 17916086). As one member of RAS oncogene family, it is a widely expressed receptor, with high mRNA expression in many tissues, particularly abundant in the colon. In cells, RAP1A was localized in cytoplasm and cell membrane(PMID: 11359771, PMID: 11359771).

Storage

Storage:
Store at -20°C. Stable for one year after shipment.

Storage Buffer:
PBS with 0.02% sodium azide and 50% glycerol pH 7.3.

Aliquoting is unnecessary for -20°C storage

For technical support and original validation data for this product please contact:

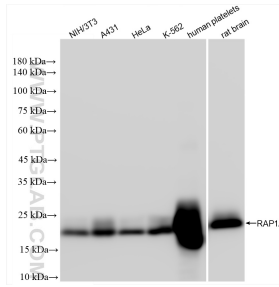
T: 4006900926

E: Proteintech-CN@ptglab.com

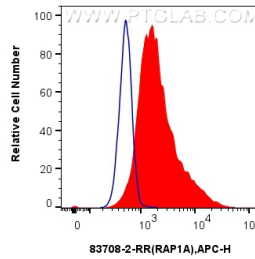
W: ptgcn.com

This product is exclusively available under Proteintech Group brand and is not available to purchase from any other manufacturer.

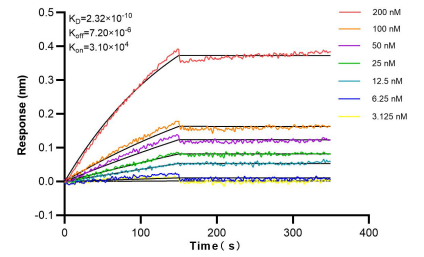
Selected Validation Data



Various lysates were subjected to SDS PAGE followed by western blot with 83708-2-RR (RAP1A antibody) at dilution of 1:10000 incubated at room temperature for 1.5 hours.



1×10^6 HeLa cells were intracellularly stained with 0.25 μ g RAP1A Recombinant antibody (83708-2-RR, Clone:240438E10) and APC-Conjugated AffiniPure Goat Anti-Rabbit IgG(H+L)(red), or 0.25 μ g Isotype Control (blue). Cells were fixed with 4% PFA and permeabilized with Flow Cytometry Perm Buffer (PF00011-C).



Bioluminescence Interferometry (BLI) kinetic assays of 83708-2-RR against Human RAP1A were performed. The affinity constant is 0.232 nM.