

For Research Use Only

RAE1 Recombinant antibody, PBS Only



Catalog Number: 83712-4-PBS

Basic Information

Catalog Number: 83712-4-PBS	GenBank Accession Number: BC103754	Purification Method: Protein A purification
Size: 1 mg/ml	GeneID (NCBI): 8480	CloneNo.: 240861B7
Source: Rabbit	UNIPROT ID: P78406	
Isotype: IgG	Full Name: RAE1 RNA export 1 homolog (S. pombe)	
Immunogen Catalog Number: AG12102	Calculated MW: 368 aa, 41 kDa	

Applications

Tested Applications:
WB, IF/ICC, ELISA

Species Specificity:
human, mouse

Background Information

Storage

Storage:
Store at -80°C.
The product is shipped with ice packs. Upon receipt, store it immediately at -80°C

Storage Buffer:
PBS Only

For technical support and original validation data for this product please contact:

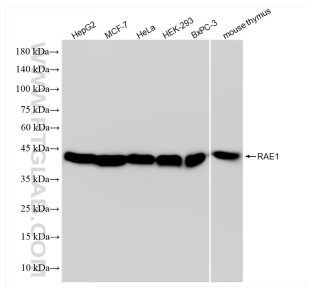
T: 4006900926

E: Proteintech-CN@ptglab.com

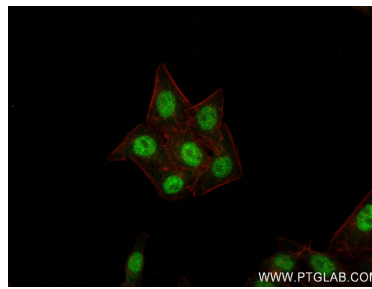
W: ptgcn.com

This product is exclusively available under Proteintech Group brand and is not available to purchase from any other manufacturer.

Selected Validation Data



Various lysates were subjected to SDS PAGE followed by western blot with 83712-4-RR (RAE1 antibody) at dilution of 1:5000 incubated at room temperature for 1.5 hours. This data was developed using the same antibody clone with 83712-4-PBS in a different storage buffer formulation.



Immunofluorescent analysis of (4% PFA) fixed HepG2 cells using RAE1 antibody (83712-4-RR, Clone: 240861B7) at dilution of 1:250 and CoraLite®488-Conjugated AffiniPure Goat Anti-Rabbit IgG(H+L) (SA00013-2), CL594-Phalloidin (red). This data was developed using the same antibody clone with 83712-4-PBS in a different storage buffer formulation.