

For Research Use Only

RAE1 Recombinant antibody, PBS Only (Capture)

Catalog Number: 83712-5-PBS



Basic Information

Catalog Number: 83712-5-PBS	GenBank Accession Number: BC103754	Purification Method: Protein A purification
Size: 1 mg/ml	GeneID (NCBI): 8480	CloneNo.: 240861G1
Source: Rabbit	UNIPROT ID: P78406	
Isotype: IgG	Full Name: RAE1 RNA export 1 homolog (S. pombe)	
Immunogen Catalog Number: AG12102	Calculated MW: 368 aa, 41 kDa	

Applications

Tested Applications:
Sandwich ELISA, Indirect ELISA, Sample test

Species Specificity:
human

Background Information

Storage

Storage:
Store at -80°C.
The product is shipped with ice packs. Upon receipt, store it immediately at -80°C

Storage Buffer:
PBS Only

For technical support and original validation data for this product please contact:

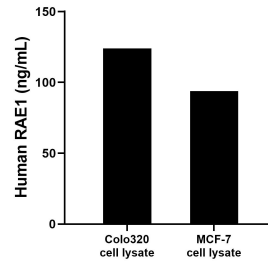
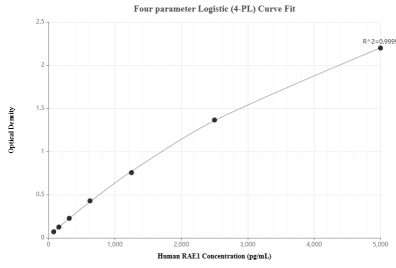
T: 4006900926

E: Proteintech-CN@ptglab.com

W: ptgcn.com

This product is exclusively available under Proteintech Group brand and is not available to purchase from any other manufacturer.

Selected Validation Data



Sandwich ELISA standard curve of MP00683-4, Human RAE1 Recombinant Matched Antibody Pair - PBS only. 83712-5-PBS was coated to a plate as the capture antibody and incubated with serial dilutions of standard Ag12102. 83712-3-PBS was HRP conjugated as the detection antibody. Range: 78.1-5000 pg/mL

Colo320 and MCF-7 cell lysates were measured. The human RAE1 concentration of detected samples was determined to be 123.92 ng/mL (based on a 2.00 mg/mL extract load) in Colo320 cell lysate and 93.86 ng/mL (based on a 1.20 mg/mL extract load) in MCF-7 cell lysate.