

For Research Use Only

# SH3GLB1 Recombinant antibody, PBS Only (Capture)



Catalog Number:83715-1-PBS

## Basic Information

Catalog Number: 83715-1-PBS	GenBank Accession Number: BC007455	Purification Method: Protein A purification
Size: 1 mg/ml	GeneID (NCBI): 51100	CloneNo.: 240623E1
Source: Rabbit	UNIPROT ID: Q9Y371	
Isotype: IgG	Full Name: SH3-domain GRB2-like endophilin B1	
Immunogen Catalog Number: AG7710	Calculated MW: 41 kDa	

## Applications

Tested Applications:  
Indirect ELISA, Cytometric bead array

Species Specificity:  
Human

## Background Information

### Storage

Storage:  
Store at -80°C.  
Storage Buffer:  
PBS Only

For technical support and original validation data for this product please contact:

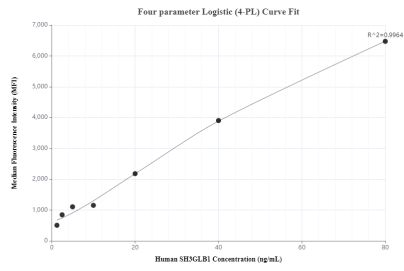
T: 4006900926

E: [Proteintech-CN@ptglab.com](mailto:Proteintech-CN@ptglab.com)

W: [ptgcn.com](http://ptgcn.com)

This product is exclusively available under Proteintech Group brand and is not available to purchase from any other manufacturer.

## Selected Validation Data



Cytometric bead array standard curve of MP00691-2, SH3GLB1 Recombinant Matched Antibody Pair, PBS Only. Capture antibody: 83715-1-PBS. Detection antibody: 83715-3-PBS. Standard: Ag7710. Range: 1.25-80 ng/mL.