

For Research Use Only

# Bif-1 Recombinant antibody

Catalog Number: 83715-1-RR



## Basic Information

<b>Catalog Number:</b> 83715-1-RR	<b>GenBank Accession Number:</b> BC007455	<b>Purification Method:</b> Protein A purification
<b>Size:</b> 1000 µg/ml	<b>GeneID (NCBI):</b> 51100	<b>CloneNo.:</b> 240623E1
<b>Source:</b> Rabbit	<b>UNIPROT ID:</b> Q9Y371	<b>Recommended Dilutions:</b> WB 1:5000-1:50000 IF/ICC 1:125-1:500
<b>Isotype:</b> IgG	<b>Full Name:</b> SH3-domain GRB2-like endophilin B1	
<b>Immunogen Catalog Number:</b> AG7710	<b>Calculated MW:</b> 41 kDa	
	<b>Observed MW:</b> 41 kDa	

## Applications

<b>Tested Applications:</b> WB, IF/ICC, ELISA	<b>Positive Controls:</b> WB : Jurkat cells, K-562 cells, HEK-293 cells IF/ICC : HeLa cells,
<b>Species Specificity:</b> human	

## Background Information

SH3GLB1 also known as Bif-1, contains an N-terminal domain, a central coiled-coil region, and a C-terminal SH3 domain, but shares no significant homology with members of the Bcl-2 family. SH3GLB1 is involved in activation of caspase-dependent apoptosis by promoting BAX/BAK1 activation (PubMed:16227588).

## Storage

**Storage:**  
Store at -20°C. Stable for one year after shipment.  
**Storage Buffer:**  
PBS with 0.02% sodium azide and 50% glycerol pH 7.3.  
Aliquoting is unnecessary for -20°C storage

For technical support and original validation data for this product please contact:

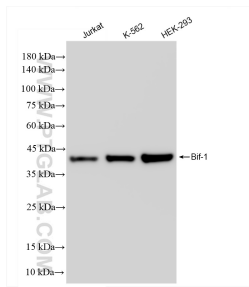
T: 4006900926

E: [Proteintech-CN@ptglab.com](mailto:Proteintech-CN@ptglab.com)

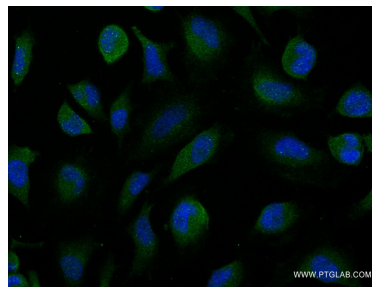
W: [ptgcn.com](http://ptgcn.com)

This product is exclusively available under Proteintech Group brand and is not available to purchase from any other manufacturer.

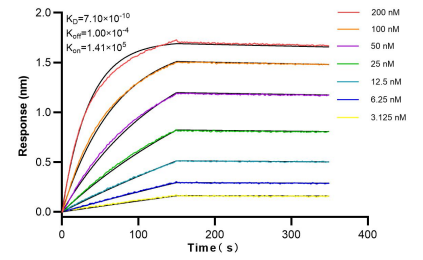
## Selected Validation Data



Various lysates were subjected to SDS PAGE followed by western blot with 83715-1-RR (Bif-1 antibody) at dilution of 1:10000 incubated at room temperature for 1.5 hours.



Immunofluorescent analysis of (-20°C Ethanol) fixed HeLa cells using Bif-1 antibody (83715-1-RR, Clone: 240623E1) at dilution of 1:250 and CoraLite®488-Conjugated AffiniPure Goat Anti-Rabbit IgG(H+L) (SA00013-2).



Bi-layer interferometry (BLI) kinetic assays of 83715-1-RR against Human Bif-1 were performed. The affinity constant is 0.71 nM.