

For Research Use Only

CSPG4 Recombinant antibody

Catalog Number: 83716-1-RR **1 Publications**



Basic Information

Catalog Number: 83716-1-RR	GenBank Accession Number: NM_001897.5	Purification Method: Protein A purification
Size: 1000 µg/ml	GeneID (NCBI): 1464	CloneNo.: 240733C9
Source: Rabbit	UNIPROT ID: Q6UVK1	Recommended Dilutions: WB 1:2000-1:10000
Isotype: IgG	Full Name: chondroitin sulfate proteoglycan 4	
	Calculated MW: 251kd	
	Observed MW: 250-310 kDa	

Applications

Tested Applications: WB, ELISA	Positive Controls: WB : A375 cells,
Cited Applications: WB, IHC	
Species Specificity: human	
Cited Species: human, mouse	

Background Information

CSPG4, also named as HMW-MAA, MCSP, MCSPG, MEL-CSPG, MSK16 and NG2, is a proteoglycan playing a role in cell proliferation and migration which stimulates endothelial cells motility during microvascular morphogenesis. CSPG4 may inhibit neurite outgrowth and growth cone collapse during axon regeneration. It is cell surface receptor for collagen alpha 2(VI) which may confer cells ability to migrate on that substrate. CSPG4 may regulate MMP16-dependent degradation and invasion of type I collagen participating in melanoma cells invasion properties. It modulates the plasminogen system by enhancing plasminogen activation and inhibiting angiostatin. CSPG4 functions as a signal transducing protein by binding through its cytoplasmic C-terminus scaffolding and signaling proteins. It promotes retraction fiber formation and cell polarization through Rho GTPase activation and stimulates alpha-4, beta-1 integrin-mediated adhesion and spreading by recruiting and activating a signaling cascade through CDC42, ACK1 and BCAR1. CSPG4 activates FAK and ERK1/ERK2 signaling cascades. The antibody is specific to CSPG4.

Notable Publications

Author	Pubmed ID	Journal	Application
Tianying Zhang	39563514	Biol Reprod	WB,IHC

Storage

Storage:
Store at -20°C. Stable for one year after shipment.
Storage Buffer:
PBS with 0.02% sodium azide and 50% glycerol pH 7.3.
Aliquoting is unnecessary for -20°C storage

For technical support and original validation data for this product please contact:

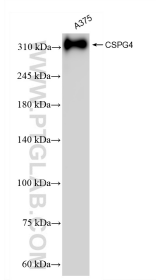
T: 4006900926

E: Proteintech-CN@ptglab.com

W: ptgcn.com

This product is exclusively available under Proteintech Group brand and is not available to purchase from any other manufacturer.

Selected Validation Data



A375 cells were subjected to SDS PAGE followed by western blot with 83716-1-RR (CSPG4 antibody) at dilution of 1:5000 incubated at room temperature for 1.5 hours.