

For Research Use Only

Mouse VCAM-1/CD106 Recombinant antibody, PBS Only (Capture/Detector)

Catalog Number:83719-3-PBS



Basic Information

Catalog Number:

83719-3-PBS

Size:

1 mg/ml

Source:

Rabbit

Isotype:

IgG

GenBank Accession Number:

CAA47989.1

GeneID (NCBI):

22329

UNIPROT ID:

P29533

Full Name:

vascular cell adhesion molecule 1

Calculated MW:

81 kDa

Purification Method:

Protein A purification

CloneNo.:

240597D2

Applications

Tested Applications:

Cytometric bead array, Sandwich ELISA, Indirect ELISA,
Sample test

Species Specificity:

mouse

Background Information

Storage

Storage:

Store at -80°C.

The product is shipped with ice packs. Upon receipt, store it immediately at -80°C

Storage Buffer:

PBS Only

For technical support and original validation data for this product please contact:

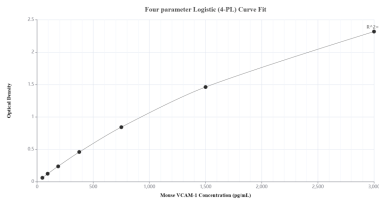
T: 4006900926

E: Proteintech-CN@ptglab.com

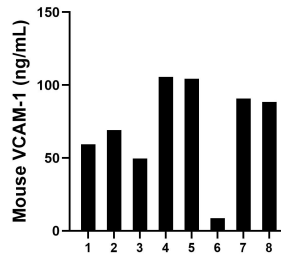
W: ptgcn.com

This product is exclusively available under Proteintech Group brand and is not available to purchase from any other manufacturer.

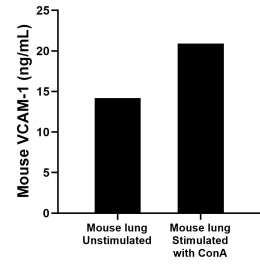
Selected Validation Data



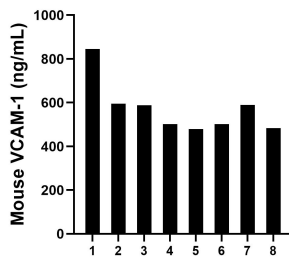
Sandwich ELISA standard curve of MP00701-4, Mouse VCAM-1/CD106 Recombinant Matched Antibody Pair - PBS only. 83719-1-PBS was coated to a plate as the capture antibody and incubated with serial dilutions of standard Eg0639. 83719-3-PBS was HRP conjugated as the detection antibody. Range: 46.88-3000 ng/mL



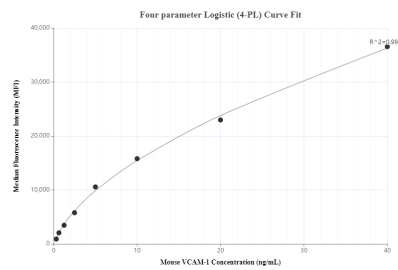
Urine of eight mice was measured. The VCAM-1 concentration of detected samples was determined to be 71.97 ng/mL with a range of 8.65-105.58 ng/mL



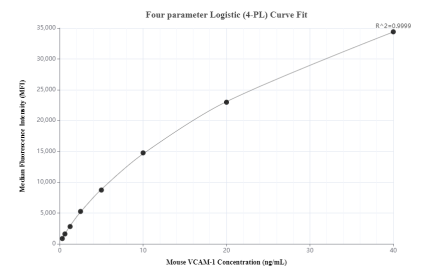
Mouse lung, cut into 1-2 mm pieces, was cultured for 3 days in 25-30 mL of RPMI supplemented with 10% fetal bovine serum and unstimulated or stimulated with 10 μ g/mL ConA. The mean VCAM-1 concentration was determined to be 14.2 ng/mL in unstimulated mouse lung superantant, 20.9 ng/mL in ConA stimulated mouse lung superantant.



Serum of eight mice was measured. The VCAM-1 concentration of detected samples was determined to be 572.76 ng/mL with a range of 483.18-844.96 ng/mL



Cytometric bead array standard curve of MP00701-2, MOUSE VCAM-1/CD106 Recombinant Matched Antibody Pair, PBS Only. Capture antibody: 83719-3-PBS. Detection antibody: 83719-5-PBS. Standard: Eg0639. Range: 0.313-40 ng/mL



Cytometric bead array standard curve of MP00701-3, MOUSE VCAM-1/CD106 Recombinant Matched Antibody Pair, PBS Only. Capture antibody: 83719-3-PBS. Detection antibody: 83719-2-PBS. Standard: Eg0639. Range: 0.313-40 ng/mL