

For Research Use Only

Mouse E-selectin Recombinant antibody, PBS Only (Detector)

Catalog Number:83720-1-PBS



Basic Information

Catalog Number:

83720-1-PBS

Size:

1 mg/ml

Source:

Rabbit

Isotype:

IgG

GenBank Accession Number:

NM_011345.2

GeneID (NCBI):

20339

UNIPROT ID:

Q00690

Full Name:

selectin, endothelial cell

Calculated MW:

67KD

Purification Method:

Protein A purification

CloneNo.:

240700B9

Applications

Tested Applications:

Cytometric bead array, Sandwich ELISA, Indirect ELISA, Sample test

Species Specificity:

mouse

Background Information

Storage

Storage:

Store at -80°C.

The product is shipped with ice packs. Upon receipt, store it immediately at -80°C

Storage Buffer:

PBS Only

For technical support and original validation data for this product please contact:

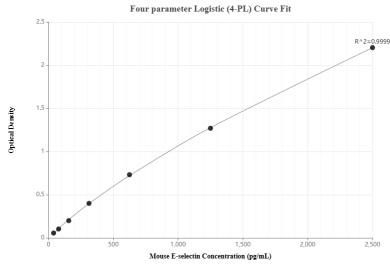
T: 4006900926

E: Proteintech-CN@ptglab.com

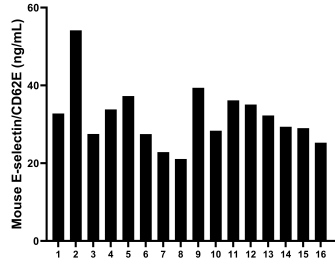
W: ptgcn.com

This product is exclusively available under Proteintech Group brand and is not available to purchase from any other manufacturer.

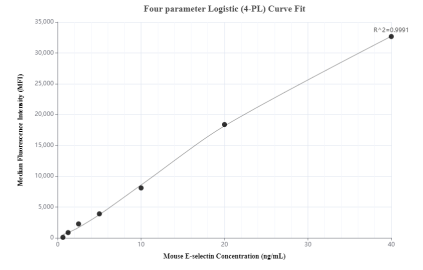
Selected Validation Data



Sandwich ELISA standard curve of MP00720-3, Mouse E-selectin / CD62E Recombinant Matched Antibody Pair - PBS only. 83720-4-PBS was coated to a plate as the capture antibody and incubated with serial dilutions of standard Eg0610. 83720-1-PBS was HRP conjugated as the detection antibody. Range: 39.1-2500 pg/mL



Serum of sixteen mice was measured. The E-selectin concentration of detected samples was determined to be 32.0 ng/mL with a range of 21.1 - 54.1 ng/mL



Cytometric bead array standard curve of MP00720-3, MOUSE E-selectin/CD62E Recombinant Matched Antibody Pair, PBS Only. Capture antibody: 83720-4-PBS. Detection antibody: 83720-1-PBS. Standard: Eg0610. Range: 0.625-40 ng/mL