

For Research Use Only

Mouse E-selectin Recombinant antibody, PBS Only (Detector)

Catalog Number:83720-2-PBS



Basic Information

Catalog Number:

83720-2-PBS

Size:

1 mg/ml

Source:

Rabbit

Isotype:

IgG

GenBank Accession Number:

NM_011345.2

GeneID (NCBI):

20339

UNIPROT ID:

Q00690

Full Name:

selectin, endothelial cell

Calculated MW:

67KD

Purification Method:

Protein A purification

CloneNo.:

240700F2

Applications

Tested Applications:

Cytometric bead array, Indirect ELISA

Species Specificity:

mouse

Background Information

Storage

Storage:

Store at -80°C.

The product is shipped with ice packs. Upon receipt, store it immediately at -80°C

Storage Buffer:

PBS Only

For technical support and original validation data for this product please contact:

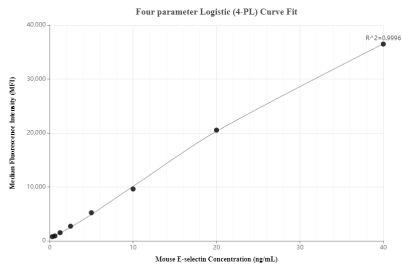
T: 4006900926

E: Proteintech-CN@ptglab.com

W: ptgcn.com

This product is exclusively available under Proteintech Group brand and is not available to purchase from any other manufacturer.

Selected Validation Data



Cytometric bead array standard curve of MP00720-2, MOUSE E-selectin/CD62E Recombinant Matched Antibody Pair, PBS Only. Capture antibody: 83720-4-PBS. Detection antibody: 83720-2-PBS. Standard: Eg0610. Range: 0.313-40 ng/mL