

For Research Use Only

Mouse CD155/PVR Recombinant antibody, PBS Only (Detector)

Catalog Number:83724-1-PBS



Basic Information

Catalog Number:

83724-1-PBS

Size:

1 mg/ml

Source:

Rabbit

Isotype:

IgG

GenBank Accession Number:

NM_027514.2

GeneID (NCBI):

52118

UNIPROT ID:

Q8K094

Full Name:

poliovirus receptor

Calculated MW:

45 kDa

Purification Method:

Protein A purification

CloneNo.:

240731A2

Applications

Tested Applications:

Cytometric bead array, Indirect ELISA

Species Specificity:

mouse

Background Information

Storage

Storage:

Store at -80°C.

The product is shipped with ice packs. Upon receipt, store it immediately at -80°C

Storage Buffer:

PBS Only

For technical support and original validation data for this product please contact:

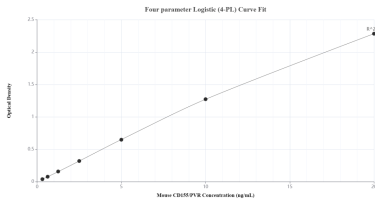
T: 4006900926

E: Proteintech-CN@ptglab.com

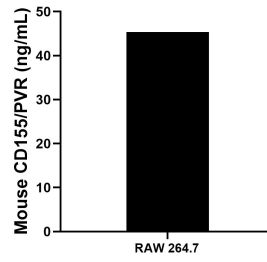
W: ptgcn.com

This product is exclusively available under Proteintech Group brand and is not available to purchase from any other manufacturer.

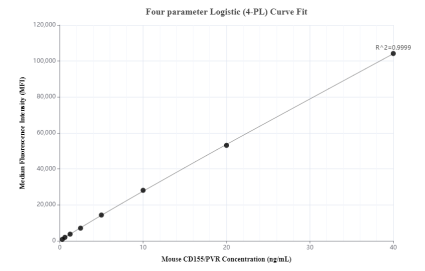
Selected Validation Data



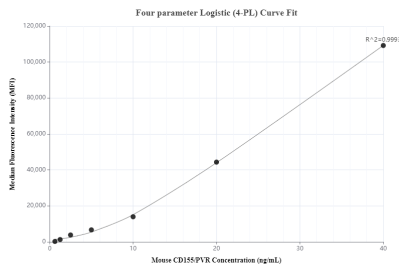
Sandwich ELISA standard curve of MP00705-2, Mouse CD155/PVR Recombinant Matched Antibody Pair - PBS only. 83724-3-PBS was coated to a plate as the capture antibody and incubated with serial dilutions of standard Eg0903. 83724-1-PBS was HRP conjugated as the detection antibody. Range: 0.313-20 ng/mL



The mean CD155/PVR concentration was determined to be 45.36 ng/mL in RAW 264.7 cell extract based on a 4.20 mg/mL extract load.



Cytometric bead array standard curve of MP00705-1, MOUSE CD155/PVR Recombinant Matched Antibody Pair, PBS Only. Capture antibody: 83724-4-PBS. Detection antibody: 83724-1-PBS. Standard: Eg0903. Range: 0.313-40 ng/mL



Cytometric bead array standard curve of MP00705-2, MOUSE CD155/PVR Recombinant Matched Antibody Pair, PBS Only. Capture antibody: 83724-3-PBS. Detection antibody: 83724-1-PBS. Standard: Eg0903. Range: 0.625-40 ng/mL