

For Research Use Only

# Mouse CD155/PVR Recombinant antibody, PBS Only

Catalog Number: 83724-6-PBS



## Basic Information

Catalog Number:

83724-6-PBS

Size:

1 mg/ml

Source:

Rabbit

Isotype:

IgG

GenBank Accession Number:

NM\_027514.2

GeneID (NCBI):

52118

UNIPROT ID:

Q8K094

Full Name:

poliovirus receptor

Calculated MW:

45 kDa

Observed MW:

80 kDa

Purification Method:

Protein A purification

CloneNo.:

240731B1

## Applications

Tested Applications:

WB, IF/ICC, ELISA

Species Specificity:

mouse

## Background Information

CD155, also known as the poliovirus receptor (PVR) or Necl-5, is one of the nectin-like family members, belonging to the Ca<sup>2+</sup> independent immunoglobulin superfamily (IgSF) in cell adhesion molecules (PMID: 37660884). CD155 is a type I transmembrane protein composed of three extracellular immunoglobulin-like domains, a transmembrane domain, and a cytoplasmic tail. It is involved in cell-to-cell and cell-to-ECM adhesion (PMID: 32019260; 11437656). CD155 acts as a ligand for immune receptors, including TIGIT, CD96 and CD226, which are expressed on T cells and NK cells. CD155 interacts with these receptors to modulate immune responses, such as T cell activation and NK cell-mediated cytotoxicity (PMID: 37660884). CD155 serves as the entry receptor for poliovirus and thereby mediates susceptibility to poliovirus infection (PMID: 15034010).

## Storage

Storage:

Store at -80°C.

The product is shipped with ice packs. Upon receipt, store it immediately at -80°C

Storage Buffer:

PBS Only

For technical support and original validation data for this product please contact:

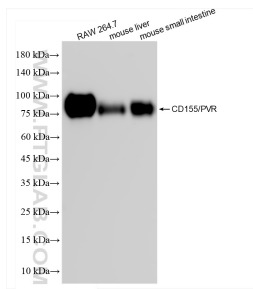
T: 4006900926

E: Proteintech-CN@ptglab.com

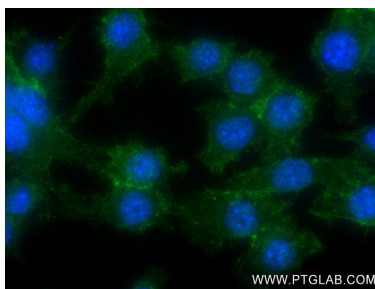
W: ptgcn.com

This product is exclusively available under Proteintech Group brand and is not available to purchase from any other manufacturer.

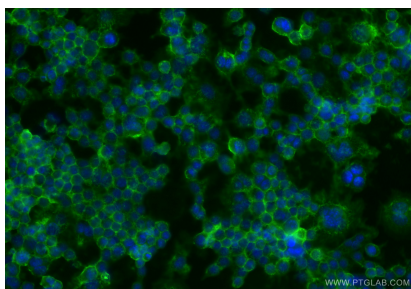
## Selected Validation Data



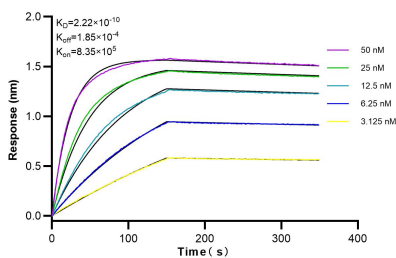
Various lysates were subjected to SDS PAGE followed by western blot with 83724-6-RR (CD155/PVR antibody) at dilution of 1:1000 incubated at room temperature for 1.5 hours. This data was developed using the same antibody clone with 83724-6-PBS in a different storage buffer formulation.



Immunofluorescent analysis of (4% PFA) fixed RAW 264.7 cells using CD155/PVR antibody (83724-6-RR, Clone: 240731B1 ) at dilution of 1:250 and CoraLite®488-Conjugated AffiniPure Goat Anti-Rabbit IgG(H+L) (SA00013-2). This data was developed using the same antibody clone with 83724-6-PBS in a different storage buffer formulation.



Immunofluorescent analysis of (-20°C Ethanol) fixed RAW 264.7 cells using CD155/PVR antibody (83724-6-RR, Clone: 240731B1 ) at dilution of 1:1000 and CoraLite®488-Conjugated Goat Anti-Rabbit IgG(H+L) (SA00013-2). This data was developed using the same antibody clone with 83724-6-PBS in a different storage buffer formulation.



Biolayer interferometry (BLI) kinetic assays of 83724-6-RR against Mouse CD155/PVR were performed. The affinity constant is 0.222 nM.