

For Research Use Only

IL1RAP Recombinant antibody, PBS Only (Detector)



Catalog Number: 83726-5-PBS

Basic Information

| | | |
|---------------------------------------|---|---|
| Catalog Number: 83726-5-PBS | GenBank Accession Number: NM_002182.4 | Purification Method: Protein A purification |
| Size: 1 mg/ml | GeneID (NCBI): 3556 | CloneNo.: 240756E7 |
| Source: Rabbit | UNIPROT ID: Q9NPH3-1 | |
| Isotype: IgG | Full Name: interleukin 1 receptor accessory protein | |
| | Calculated MW: 65 kDa | |

Applications

Tested Applications:
Sandwich ELISA, Indirect ELISA, Sample test

Species Specificity:
human

Background Information

Storage

Storage:
Store at -80°C.
The product is shipped with ice packs. Upon receipt, store it immediately at -80°C

Storage Buffer:
PBS Only

For technical support and original validation data for this product please contact:

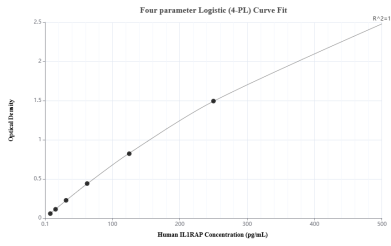
T: 4006900926

E: Proteintech-CN@ptglab.com

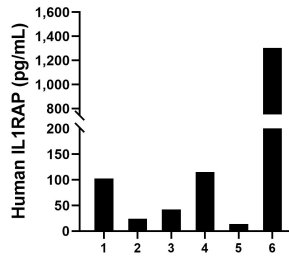
W: ptgcn.com

This product is exclusively available under Proteintech Group brand and is not available to purchase from any other manufacturer.

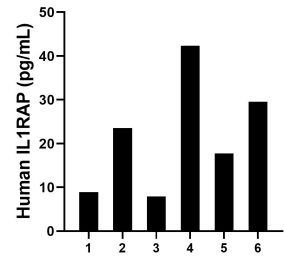
Selected Validation Data



Sandwich ELISA standard curve of MP00708-4, Human IL1RAP Recombinant Matched Antibody Pair - PBS only. 98073-1-PBS was coated to a plate as the capture antibody and incubated with serial dilutions of standard Eg0827. 83726-5-PBS was HRP conjugated as the detection antibody. Range: 7.8-500 pg/mL



Plasma of six individual healthy human donors was measured. The human IL1RAP concentration of detected samples was determined to be 266.79 pg/mL with a range of 13.79 - 1,302.80 pg/mL.



Serum of six individual healthy human donors was measured. The human IL1RAP concentration of detected samples was determined to be 21.67 pg/mL with a range of 7.89 - 42.37 pg/mL.