

For Research Use Only

Mouse Apolipoprotein E Recombinant antibody, PBS Only (Detector)



Catalog Number: **83728-1-PBS**

Basic Information

Catalog Number: 83728-1-PBS	GenBank Accession Number: NM_001305819.1	Purification Method: Protein A purification
Size: 1 mg/ml	GeneID (NCBI): 11816	CloneNo.: 240786C6
Source: Rabbit	UNIPROT ID: P08226	
Isotype: IgG	Full Name: Apolipoprotein E	
	Calculated MW: 36kDa	

Applications

Tested Applications:
Cytometric bead array, Sandwich ELISA, Indirect ELISA,
Sample test

Species Specificity:
mouse

Background Information

Storage

Storage:
Store at -80°C.
The product is shipped with ice packs. Upon receipt, store it immediately at -80°C
Storage Buffer:
PBS Only

For technical support and original validation data for this product please contact:

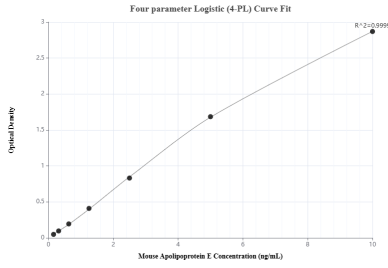
T: 4006900926

E: Proteintech-CN@ptglab.com

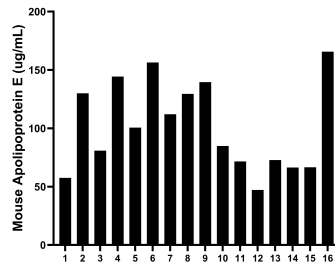
W: ptgcn.com

This product is exclusively available under Proteintech Group brand and is not available to purchase from any other manufacturer.

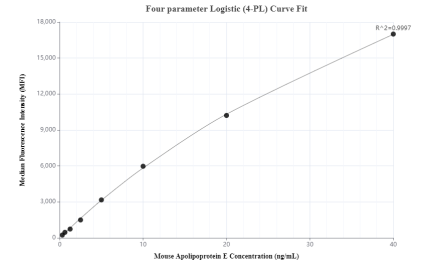
Selected Validation Data



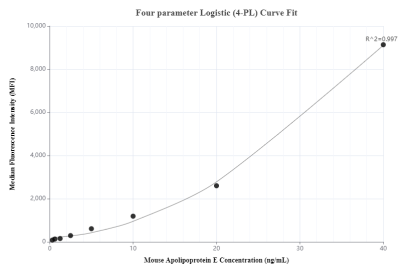
Sandwich ELISA standard curve of MP00712-1, Mouse Apolipoprotein E Recombinant Matched Antibody Pair - PBS only. 83728-3-PBS was coated to a plate as the capture antibody and incubated with serial dilutions of standard Eg0941. 83728-1-PBS was HRP conjugated as the detection antibody. Range: 0.16-10 ng/mL



Serum of sixteen mice was measured. The Apolipoprotein E concentration of detected samples was determined to be 101.6 μ g/mL with a range of 47.2 - 165.7 μ g/mL.



Cytometric bead array standard curve of MP00712-1, MOUSE Apolipoprotein E Recombinant Matched Antibody Pair, PBS Only. Capture antibody: 83728-3-PBS. Detection antibody: 83728-1-PBS. Standard: Eg1093. Range: 0.313-40 ng/mL



Cytometric bead array standard curve of MP00712-2, MOUSE Apolipoprotein E Recombinant Matched Antibody Pair, PBS Only. Capture antibody: 83728-2-PBS. Detection antibody: 83728-1-PBS. Standard: Eg1093. Range: 0.313-40 ng/mL