

For Research Use Only

# Mouse Apolipoprotein E

## Recombinant antibody, PBS Only



Catalog Number: 83728-4-PBS

### Basic Information

<b>Catalog Number:</b> 83728-4-PBS	<b>GenBank Accession Number:</b> NM_001305819.1	<b>Purification Method:</b> Protein A purification
<b>Size:</b> 1 mg/ml	<b>GeneID (NCBI):</b> 11816	<b>CloneNo.:</b> 240786C3
<b>Source:</b> Rabbit	<b>UNIPROT ID:</b> P08226	
<b>Isotype:</b> IgG	<b>Full Name:</b> Apolipoprotein E	
	<b>Calculated MW:</b> 36kDa	
	<b>Observed MW:</b> 36 kDa	

### Applications

**Tested Applications:**  
WB, ELISA

**Species Specificity:**  
mouse

### Background Information

Apolipoprotein E (apoE) is a core component of plasma lipoproteins that participates in diverse biological processes, including plasma lipoprotein metabolism, intracellular cholesterol utilization, cell growth, immunoregulation, and neuronal growth and repair (PMID: 17854398). Mouse apoE, like apoE4, contains the equivalent of Arg-112 and Glu-255, but lacks the critical Arg-61 equivalent (it contains Thr-61). Thus, mouse apoE does not display apoE4 domain interaction (PMID: 11553788).

### Storage

**Storage:**  
Store at -80°C.  
**The product is shipped with ice packs. Upon receipt, store it immediately at -80°C**

**Storage Buffer:**  
PBS Only

For technical support and original validation data for this product please contact:

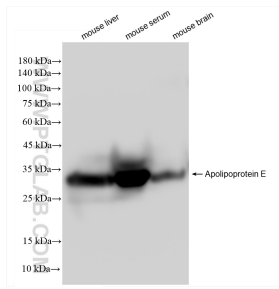
T: 4006900926

E: [Proteintech-CN@ptglab.com](mailto:Proteintech-CN@ptglab.com)

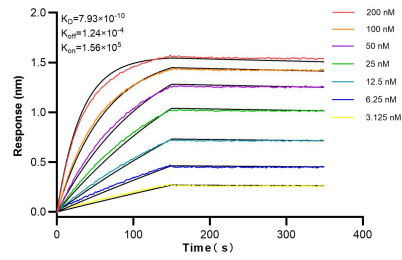
W: [ptgcn.com](http://ptgcn.com)

**This product is exclusively available under Proteintech Group brand and is not available to purchase from any other manufacturer.**

## Selected Validation Data



Various lysates were subjected to SDS PAGE followed by western blot with 83728-4-RR (ApoE antibody) at dilution of 1:10000 incubated at room temperature for 1.5 hours. This data was developed using the same antibody clone with 83728-4-PBS in a different storage buffer formulation.



Biolayer interferometry (BLI) kinetic assays of 83728-4-RR against Mouse Apolipoprotein E were performed. The affinity constant is 0.793 nM.