

For Research Use Only

# Apolipoprotein E Recombinant antibody



Catalog Number: 83728-4-RR

## Basic Information

<b>Catalog Number:</b> 83728-4-RR	<b>GenBank Accession Number:</b> NM_001305819.1	<b>Purification Method:</b> Protein A purification
<b>Size:</b> 1000 µg/ml	<b>GeneID (NCBI):</b> 11816	<b>CloneNo.:</b> 240786C3
<b>Source:</b> Rabbit	<b>UNIPROT ID:</b> P08226	<b>Recommended Dilutions:</b> WB 1:5000-1:50000 IF/ICC 1:125-1:500
<b>Isotype:</b> IgG	<b>Full Name:</b> Apolipoprotein E	
	<b>Calculated MW:</b> 36kDa	
	<b>Observed MW:</b> 36 kDa	

## Applications

**Tested Applications:**  
WB, IF/ICC, ELISA

**Species Specificity:**  
mouse

### Positive Controls:

**WB :** mouse liver tissue, mouse serum, mouse brain tissue

**IF/ICC :** HepG2 cells,

## Background Information

Apolipoprotein E (apoE) is a core component of plasma lipoproteins that participates in diverse biological processes, including plasma lipoprotein metabolism, intracellular cholesterol utilization, cell growth, immunoregulation, and neuronal growth and repair (PMID: 17854398). Mouse apoE, like apoE4, contains the equivalent of Arg-112 and Glu-255, but lacks the critical Arg-61 equivalent (it contains Thr-61). Thus, mouse apoE does not display apoE4 domain interaction (PMID: 11553788).

## Storage

**Storage:**  
Store at -20°C. Stable for one year after shipment.

**Storage Buffer:**  
PBS with 0.02% sodium azide and 50% glycerol pH 7.3.

**Aliquoting is unnecessary for -20°C storage**

For technical support and original validation data for this product please contact:

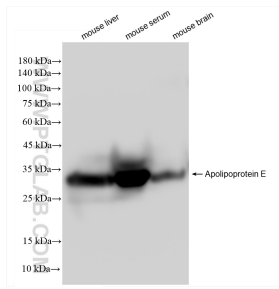
T: 4006900926

E: Proteintech-CN@ptglab.com

W: ptgcn.com

**This product is exclusively available under Proteintech Group brand and is not available to purchase from any other manufacturer.**

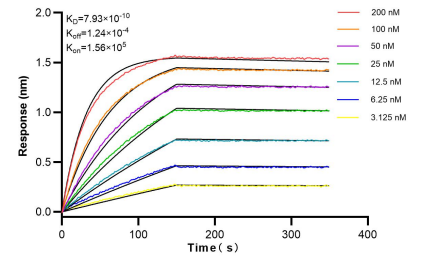
## Selected Validation Data



Various lysates were subjected to SDS PAGE followed by western blot with 83728-4-RR (Apolipoprotein E antibody) at dilution of 1:10000 incubated at room temperature for 1.5 hours.



Immunofluorescent analysis of (-20°C Ethanol) fixed HepG2 cells using Apolipoprotein E antibody (83728-4-RR, Clone: 240786C3) at dilution of 1:250 and Multi-rAb CoraLite® Plus 488-Goat Anti-Rabbit Recombinant Secondary Antibody (H+L) (RGAR002), CL594-Phalloidin (red).



Bi-layer interferometry (BLI) kinetic assays of 83728-4-RR against Mouse Apolipoprotein E were performed. The affinity constant is 0.793 nM.