

For Research Use Only

CLIC2 Recombinant antibody

Catalog Number: 83730-3-RR



Basic Information

Catalog Number: 83730-3-RR	GenBank Accession Number: BC005367	Purification Method: Protein A purification
Size: 1000 µg/ml	GeneID (NCBI): 1193	CloneNo.: 240726D1
Source: Rabbit	UNIPROT ID: O15247	Recommended Dilutions: WB 1:5000-1:50000
Isotype: IgG	Full Name: chloride intracellular channel 2	
Immunogen Catalog Number: AG6766	Calculated MW: 28 kDa	
	Observed MW: 28-30 kDa	

Applications

Tested Applications: WB, ELISA	Positive Controls: WB : human testis tissue, K-562 cells, human heart tissue, human placenta tissue
Species Specificity: human	

Background Information

CLIC2 (chloride intracellular channel 2), also known as CLCNL2. It is expected to be located in cytoplasm and membrane. CLIC-2 exists as a monomer. It also has an unusual enzyme activity profile. While the CXXC active site motif is conserved between CLIC-2 and the glutaredoxins, no thiol transferase activity was detected. In contrast, low glutathione peroxidase activity was recorded. CLIC-2 was found to be widely distributed in tissues including heart and skeletal muscle. Functional studies showed that CLIC-2 inhibited cardiac ryanodine receptor Ca²⁺ release channels in lipid bilayers when added to the cytoplasmic side of the channels and inhibited Ca²⁺ release from cardiac sarcoplasmic reticulum vesicles. The calculated molecular weight of CLIC2 is 28 kDa.

Storage

Storage:
Store at -20°C. Stable for one year after shipment.
Storage Buffer:
PBS with 0.02% sodium azide and 50% glycerol pH 7.3.
Aliquoting is unnecessary for -20°C storage

For technical support and original validation data for this product please contact:

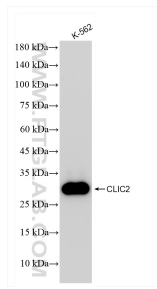
T: 4006900926

E: Proteintech-CN@ptglab.com

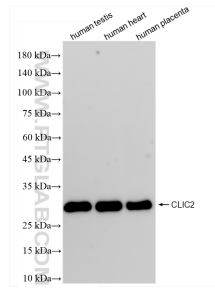
W: ptgcn.com

This product is exclusively available under Proteintech Group brand and is not available to purchase from any other manufacturer.

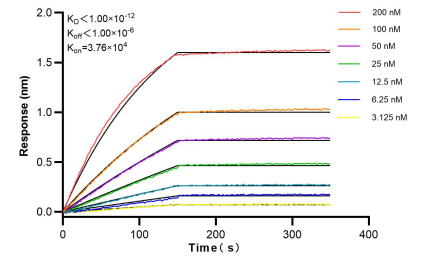
Selected Validation Data



K-562 cells were subjected to SDS PAGE followed by western blot with 83730-3-RR (CLIC2 antibody) at dilution of 1:10000 incubated at room temperature for 1.5 hours.



Various lysates were subjected to SDS PAGE followed by western blot with 83730-3-RR (CLIC2 antibody) at dilution of 1:10000 incubated at room temperature for 1.5 hours.



Bi-layer interferometry (BLI) kinetic assays of 83730-3-RR against Human CLIC2 were performed. The affinity constant is below 1 pM.