

For Research Use Only

# POT1 Recombinant antibody, PBS Only (Detector)



Catalog Number: 83732-2-PBS

## Basic Information

<b>Catalog Number:</b> 83732-2-PBS	<b>GenBank Accession Number:</b> BC002923	<b>Purification Method:</b> Protein A purification
<b>Size:</b> 1 mg/ml	<b>GeneID (NCBI):</b> 25913	<b>CloneNo.:</b> 240688E5
<b>Source:</b> Rabbit	<b>UNIPROT ID:</b> Q9NUX5	
<b>Isotype:</b> IgG	<b>Full Name:</b> POT1 protection of telomeres 1 homolog (S. pombe)	
<b>Immunogen Catalog Number:</b> AG0875	<b>Calculated MW:</b> 71 kDa	

## Applications

**Tested Applications:**  
IF/ICC, Cytometric bead array, Indirect ELISA

**Species Specificity:**  
human

## Background Information

### Storage

**Storage:**  
Store at -80°C.  
**The product is shipped with ice packs. Upon receipt, store it immediately at -80°C**

**Storage Buffer:**  
PBS Only

For technical support and original validation data for this product please contact:

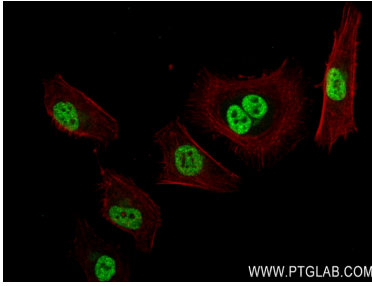
T: 4006900926

E: [Proteintech-CN@ptglab.com](mailto:Proteintech-CN@ptglab.com)

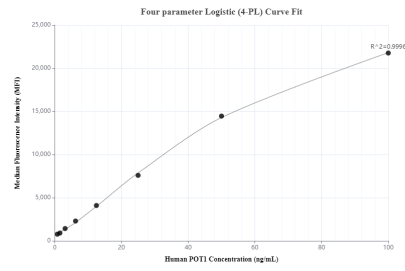
W: [ptgcn.com](http://ptgcn.com)

**This product is exclusively available under Proteintech Group brand and is not available to purchase from any other manufacturer.**

## Selected Validation Data



Immunofluorescent analysis of (4% PFA) fixed HeLa cells using POT1 antibody (83732-2-RR, Clone: 240688E5 ) at dilution of 1:250 and CoraLite®488-Conjugated AffiniPure Goat Anti-Rabbit IgG(H+L) (SA00013-2), CL594-Phalloidin (red). This data was developed using the same antibody clone with 83732-2-PBS in a different storage buffer formulation.



Cytometric bead array standard curve of MP00711-1, POT1 Recombinant Matched Antibody Pair, PBS Only. Capture antibody: 83732-4-PBS. Detection antibody: 83732-2-PBS. Standard: Ag0875. Range: 0.78-100 ng/mL.