

For Research Use Only

# POT1 Recombinant antibody

Catalog Number: 83732-2-RR



## Basic Information

<b>Catalog Number:</b> 83732-2-RR	<b>GenBank Accession Number:</b> BC002923	<b>Purification Method:</b> Protein A purification
<b>Size:</b> 1000 µg/ml	<b>GeneID (NCBI):</b> 25913	<b>CloneNo.:</b> 240688E5
<b>Source:</b> Rabbit	<b>UNIPROT ID:</b> Q9NUX5	<b>Recommended Dilutions:</b> IF/ICC 1:125-1:500
<b>Isotype:</b> IgG	<b>Full Name:</b> POT1 protection of telomeres 1	
<b>Immunogen Catalog Number:</b> AG0875	<b>homolog (S. pombe)</b>	
	<b>Calculated MW:</b> 71 kDa	

## Applications

<b>Tested Applications:</b> IF/ICC, FC (Intra), ELISA	<b>Positive Controls:</b> IF/ICC : HeLa cells,
<b>Species Specificity:</b> human	

## Background Information

Protection of telomeres 1(POT1) is a conserved protein that binds the G-rich stand of its own telomeric repeat sequence, with a role in protecting chromosome ends. It's housekeeping gene that is required to ensure the integrity of chromosome ends in all cells. It's a component of the telomerase ribonucleoprotein(RNP) complex that is essential for the replication of chromosome termini. It consists the TRF1 complex that is involved in the regulation of telomere length by cis-inhibition of telomerase. We have discovered that POT1 exists in at least three consistently occurring forms; 90, 70 and 45kDa. The unexpected molecular weights of POT1 seem to be associated with SUMO1 and ubiquitin conjugation; the latter occurring at a double lysine residue at 289-KK-290 (.PMID: 24054699)

## Storage

**Storage:**  
Store at -20°C. Stable for one year after shipment.  
**Storage Buffer:**  
PBS with 0.02% sodium azide and 50% glycerol pH 7.3.  
Aliquoting is unnecessary for -20°C storage

For technical support and original validation data for this product please contact:

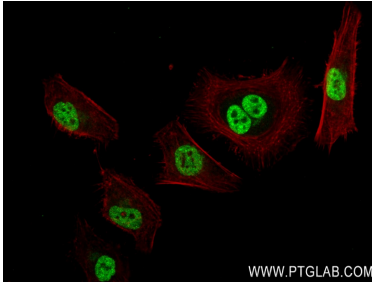
T: 4006900926

E: Proteintech-CN@ptglab.com

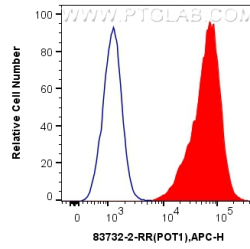
W: ptgcn.com

**This product is exclusively available under Proteintech Group brand and is not available to purchase from any other manufacturer.**

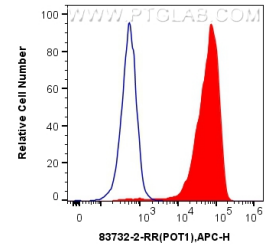
## Selected Validation Data



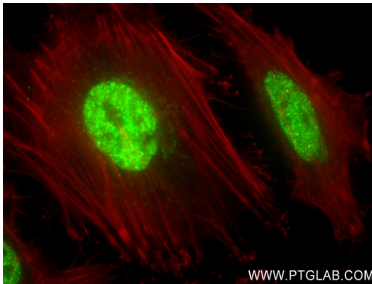
Immunofluorescent analysis of (4% PFA) fixed HeLa cells using POT1 antibody (83732-2-RR, Clone: 240688E5 ) at dilution of 1:250 and CoraLite®488-Conjugated AffiniPure Goat Anti-Rabbit IgG(H+L) (SA00013-2), CL594-Phalloidin (red).



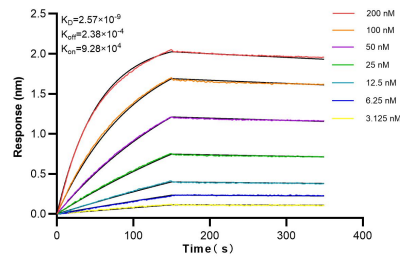
$1 \times 10^6$  U2OS cells were intracellularly stained with 0.25 ug POT1 Recombinant antibody (83732-2-RR, Clone:240688E5) and APC-Conjugated AffiniPure Goat Anti-Rabbit IgG(H+L)(red), or 0.25 ug Isotype Control (blue). Cells were fixed and permeabilized with Transcription Factor Staining Buffer Kit (PF00011).



$1 \times 10^6$  SH-SY5Y cells were intracellularly stained with 0.25 ug POT1 Recombinant antibody (83732-2-RR, Clone:240688E5) and APC-Conjugated AffiniPure Goat Anti-Rabbit IgG(H+L)(red), or 0.25 ug Isotype Control (blue). Cells were fixed and permeabilized with Transcription Factor Staining Buffer Kit (PF00011).



Immunofluorescent analysis of (4% PFA) fixed HeLa cells using POT1 antibody (83732-2-RR, Clone: 240688E5 ) at dilution of 1:250 and CoraLite®488-Conjugated AffiniPure Goat Anti-Rabbit IgG(H+L) (SA00013-2), CL594-Phalloidin (red).



Biolayer interferometry (BLI) kinetic assays of 83732-2-RR against Human POT1 were performed. The affinity constant is 2.57 nM.