

CBR1 Recombinant antibody

Catalog Number: 83736-4-RR

Basic Information

Catalog Number: 83736-4-RR	GenBank Accession Number: BC002511	Purification Method: Protein A purification
Size: 1000 µg/ml	GeneID (NCBI): 873	CloneNo.: 240707G1
Source: Rabbit	UNIPROT ID: P16152	Recommended Dilutions: WB 1:5000-1:50000 IF/ICC 1:125-1:500
Isotype: IgG	Full Name: carbonyl reductase 1	
Immunogen Catalog Number: AG34830	Calculated MW: 30 kDa	
	Observed MW: 30 kDa	

Applications

Tested Applications: WB, IF/ICC, ELISA	Positive Controls:
Species Specificity: human	WB : HeLa cells, A549 cells, HEK-293T cells, MCF-7 cells, SKOV-3 cells IF/ICC : HeLa cells,

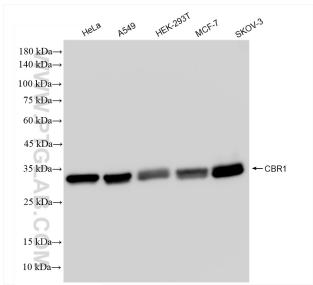
Background Information

CBR1 belongs to the short-chain dehydrogenases/reductases (SDR) family, which function as NADPH-dependent oxidoreductases having wide specificity for carbonyl compounds, such as quinones, prostaglandins, and various xenobiotics.

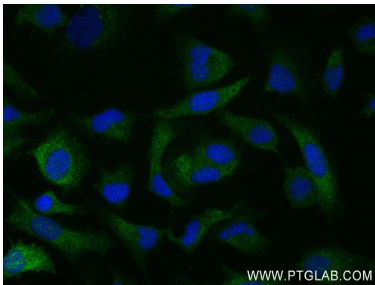
Storage

Storage:
Store at -20°C. Stable for one year after shipment.
Storage Buffer:
PBS with 0.02% sodium azide and 50% glycerol pH 7.3.
Aliquoting is unnecessary for -20°C storage

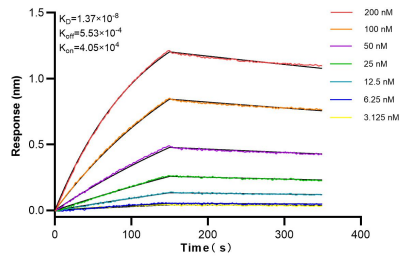
Selected Validation Data



Various lysates were subjected to SDS PAGE followed by western blot with 83736-4-RR (CBR1 antibody) at dilution of 1:10000 incubated at room temperature for 1.5 hours.



Immunofluorescent analysis of (-20°C Ethanol) fixed HeLa cells using CBR1 antibody (83736-4-RR, Clone: 240707G1) at dilution of 1:250 and CoraLite® 488-Conjugated AffiniPure Goat Anti-Rabbit IgG(H+L) (SA00013-2).



Biolayer interferometry (BLI) kinetic assays of 83736-4-RR against Human CBR1 were performed. The affinity constant is 13.7 nM.