

For Research Use Only

Rat C-reactive protein Recombinant antibody, PBS Only (Capture)

Catalog Number: 83741-5-PBS



Basic Information

Catalog Number: 83741-5-PBS	GenBank Accession Number: NM_017096.3	Purification Method: Protein A purification
Size: 1 mg/ml	GeneID (NCBI): 25419	CloneNo.: 240759E4
Source: Rabbit	UNIPROT ID: P48199	
Isotype: IgG	Full Name: C-reactive protein, pentraxin-related	
	Calculated MW: 25 kDa	

Applications

Tested Applications:
Sandwich ELISA, Indirect ELISA, Sample test

Species Specificity:
rat

Background Information

Storage

Storage:
Store at -80°C.
The product is shipped with ice packs. Upon receipt, store it immediately at -80°C

Storage Buffer:
PBS Only

For technical support and original validation data for this product please contact:

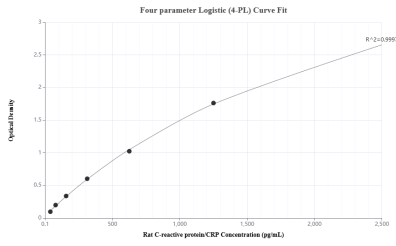
T: 4006900926

E: Proteintech-CN@ptglab.com

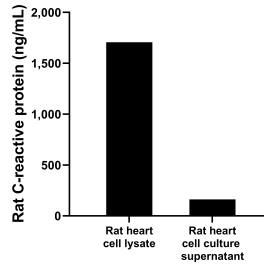
W: ptgcn.com

This product is exclusively available under Proteintech Group brand and is not available to purchase from any other manufacturer.

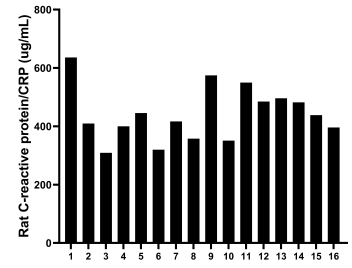
Selected Validation Data



Sandwich ELISA standard curve of MP00692-2, Rat C-reactive protein/CRP Recombinant Matched Antibody Pair - PBS only. 83741-5-PBS was coated to a plate as the capture antibody and incubated with serial dilutions of standard Eg0942. 83741-4-PBS was HRP conjugated as the detection antibody. Range: 39.1-2500 pg/mL



Rat heart, cut into 1-2 mm pieces, was cultured in 25-30 ml of RPMI supplemented with 10% fetal bovine serum. The cell culture supernatant was removed, assayed for rat C-reactive protein, and measured 161.65 ng/mL. Cells were lysed, assayed for rat C-reactive protein, and measured 1,706.0465 ng/mL



Serum of sixteen rats was measured. The rat C-reactive protein/CRP concentration of detected samples was determined to be 441.8 ug/mL with a range of 309.02 - 635.99 ug/mL