

For Research Use Only

Cathepsin D Recombinant antibody

Catalog Number: 83743-2-RR



Basic Information

Catalog Number:

83743-2-RR

Size:

1000 µg/ml

Source:

Rabbit

Isotype:

IgG

GenBank Accession Number:

NM_001909.5

GeneID (NCBI):

1509

UNIPROT ID:

P07339

Full Name:

cathepsin D

Calculated MW:

45kDa

Observed MW:

32 kDa, 48 kDa, 52 kDa

Purification Method:

Protein A purification

CloneNo.:

240775E7

Recommended Dilutions:

WB 1:5000-1:50000

Applications

Tested Applications:

WB, FC (Intra), ELISA

Species Specificity:

human

Positive Controls:

WB : A431 cells, MCF-7 cells, SH-SY5Y cells

Background Information

CTSD (Cathepsin D) also named CPSD, belongs to the peptidase A1 family. It is ubiquitously expressed and is involved in proteolytic degradation, cell invasion, and apoptosis. Human CTSD is synthesized as a 52-kDa precursor that is converted into an active 48-kDa single-chain intermediate in the endosomes, and then into a fully active mature form, composed of a 34-kDa heavy chain and a 14-kDa light chain, in the lysosomes. It is a lysosomal acid protease found in neutrophils and monocytes and involved in the pathogenesis of several diseases such as breast cancer and possibly Alzheimer disease (PMID: 27114232, PMID: 30717773, PMID: 30051532).

Storage

Storage:

Store at -20°C. Stable for one year after shipment.

Storage Buffer:

PBS with 0.02% sodium azide and 50% glycerol pH 7.3.

Aliquoting is unnecessary for -20°C storage

For technical support and original validation data for this product please contact:

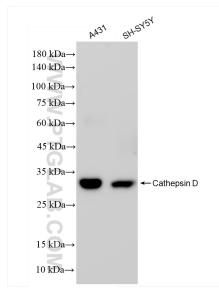
T: 4006900926

E: Proteintech-CN@ptglab.com

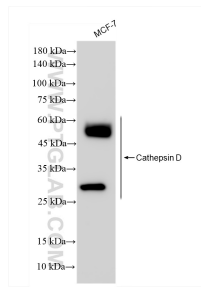
W: ptgcn.com

This product is exclusively available under Proteintech Group brand and is not available to purchase from any other manufacturer.

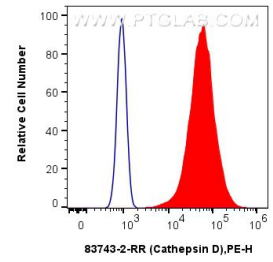
Selected Validation Data



Various lysates were subjected to SDS PAGE followed by western blot with 83743-2-RR (Cathepsin D antibody) at dilution of 1:10000 incubated at room temperature for 1.5 hours.



MCF-7 cells were subjected to SDS PAGE followed by western blot with 83743-2-RR (Cathepsin D antibody) at dilution of 1:10000 incubated at room temperature for 1.5 hours.



1x10⁶ MCF-7 cells were intracellularly stained with 0.25 ug Cathepsin D Recombinant antibody (83743-2-RR, Clone:240775E7) and PE-Conjugated AffiniPure Goat Anti-Rabbit IgG(H+L)(red), or 0.25 ug Isotype Control (blue). Cells were fixed with 4% PFA and permeabilized with Flow Cytometry Perm Buffer (PF00011-C).