

For Research Use Only

Cathepsin D Recombinant antibody

Catalog Number: 83743-5-RR



Basic Information

Catalog Number: 83743-5-RR	GenBank Accession Number: NM_001909.5	Purification Method: Protein A purification
Size: 1000 µg/ml	GeneID (NCBI): 1509	CloneNo.: 240775G2
Source: Rabbit	UNIPROT ID: P07339	Recommended Dilutions: IF/ICC 1:125-1:500
Isotype: IgG	Full Name: cathepsin D	
	Calculated MW: 45kDa	

Applications

Tested Applications: IF/ICC, ELISA	Positive Controls: IF/ICC : HepG2 cells,
Species Specificity: human	

Background Information

CTSD (Cathepsin D) also named CPSD, belongs to the peptidase A1 family. It is ubiquitously expressed and is involved in proteolytic degradation, cell invasion, and apoptosis. Human CTSD is synthesized as a 52-kDa precursor that is converted into an active 48-kDa single-chain intermediate in the endosomes, and then into a fully active mature form, composed of a 34-kDa heavy chain and a 14-kDa light chain, in the lysosomes. It is a lysosomal acid protease found in neutrophils and monocytes and involved in the pathogenesis of several diseases such as breast cancer and possibly Alzheimer disease (PMID: 27114232, PMID: 30717773, PMID: 30051532).

Storage

Storage:
Store at -20°C. Stable for one year after shipment.
Storage Buffer:
PBS with 0.02% sodium azide and 50% glycerol pH 7.3.
Aliquoting is unnecessary for -20°C storage

For technical support and original validation data for this product please contact:

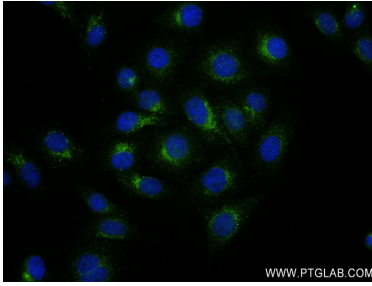
T: 4006900926

E: Proteintech-CN@ptglab.com

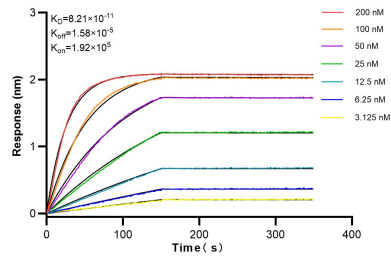
W: ptgcn.com

This product is exclusively available under Proteintech Group brand and is not available to purchase from any other manufacturer.

Selected Validation Data



Immunofluorescent analysis of (4% PFA) fixed HepG2 cells using Cathepsin D antibody (83743-5-RR, Clone: 240775G2) at dilution of 1:250 and CoraLite®488-Conjugated AffiniPure Goat Anti-Rabbit IgG(H+L) (SA00013-2).



Biolayer interferometry (BLI) kinetic assays of 83743-5-RR against Human Cathepsin D were performed. The affinity constant is 0.821 nM.