

For Research Use Only

Collagen Type I Recombinant antibody, PBS Only

Catalog Number: 83752-5-PBS



Basic Information

Catalog Number: 83752-5-PBS	GenBank Accession Number: BC054498	Purification Method: Protein A purification
Size: 1 mg/ml	GeneID (NCBI): 1278	CloneNo.: 240665F8
Source: Rabbit	UNIPROT ID: P08123	
Isotype: IgG	Full Name: collagen, type I, alpha 2	
Immunogen Catalog Number: AG6281	Calculated MW: 1366 aa, 130 kDa	
	Observed MW: 120-130 kDa	

Applications

Tested Applications:
IF/ICC, ELISA

Species Specificity:
human, rat

Background Information

Type I collagen, the major structural component of connective tissues such as skin, tendon and bone, is the most abundant and widely expressed collagen in humans (PMID: 7620364; 8645190; 9016532). Type I collagen is a heterotrimer comprising one alpha 2(I) and two alpha 1(I) chains which are encoded by the unlinked loci COL1A2 and COL1A1 respectively. Type I collagen has a molecular mass of about 250-300 kDa, while the alpha 2(I) chain has a molecular weight of about 100-140 kDa. Mutations in COL1A2 gene are associated with osteogenesis imperfecta, Ehlers-Danlos syndrome, idiopathic osteoporosis, and atypical Marfan syndrome. This antibody raised against 1017-1366 aa of human pro-alpha 2 chain of type I collagen can recognize collagen alpha 2(1) chain and C-terminal propeptide of pro-alpha 2(1) chain.

Storage

Storage:
Store at -80°C.
The product is shipped with ice packs. Upon receipt, store it immediately at -80°C

Storage Buffer:
PBS Only

For technical support and original validation data for this product please contact:

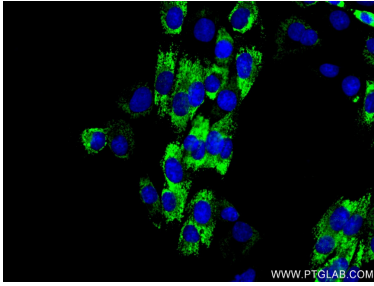
T: 4006900926

E: Proteintech-CN@ptglab.com

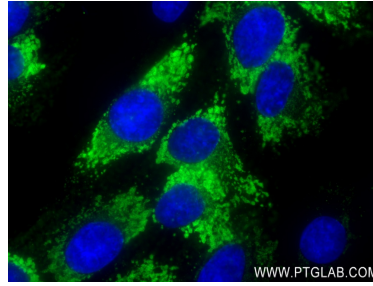
W: ptgcn.com

This product is exclusively available under Proteintech Group brand and is not available to purchase from any other manufacturer.

Selected Validation Data



Immunofluorescent analysis of (4% PFA) fixed HSC-T6 cells using COL1A2 antibody (83752-5-RR, Clone: 240665F8) at dilution of 1:250 and CoraLite@488-Conjugated AffiniPure Goat Anti-Rabbit IgG(H+L) (SA00013-2). This data was developed using the same antibody clone with 83752-5-PBS in a different storage buffer formulation.



Immunofluorescent analysis of (4% PFA) fixed HSC-T6 cells using COL1A2 antibody (83752-5-RR, Clone: 240665F8) at dilution of 1:250 and CoraLite@488-Conjugated AffiniPure Goat Anti-Rabbit IgG(H+L) (SA00013-2). This data was developed using the same antibody clone with 83752-5-PBS in a different storage buffer formulation.

