

For Research Use Only

# ISLR Recombinant antibody

Catalog Number:83782-5-RR



## Basic Information

Catalog Number:

83782-5-RR

Size:

1000 ug/ml

Source:

Rabbit

Isotype:

IgG

Immunogen Catalog Number:

AG19446

GenBank Accession Number:

BC022478

GeneID (NCBI):

3671

UNIPROT ID:

O14498

Full Name:

immunoglobulin superfamily  
containing leucine-rich repeat

Calculated MW:

428 aa, 46 kDa

Observed MW:

44-46 kDa

Purification Method:

Protein A purification

CloneNo.:

240727D4

Recommended Dilutions:

WB 1:500-1:2000

## Applications

Tested Applications:

WB, ELISA

Species Specificity:

human, mouse

Positive Controls:

WB : mouse retina tissue, NIH/3T3 cells

## Background Information

The Immunoglobulin superfamily containing leucine-rich repeat protein (ISLR), is involved in various biological events, such as embryonic development, Gaucher's disease, and replicative senescence of fibroblasts in some organs, including the heart, pancreas, and bone marrow. ISLR, also known as meflin, is a newly discovered marker of mesenchymal stem cells, which is involved in pathological fibrosis and the cancer microenvironment. (PMID: 34713300)

## Storage

Storage:

Store at -20°C. Stable for one year after shipment.

Storage Buffer:

PBS with 0.02% sodium azide and 50% glycerol pH 7.3.

Aliquoting is unnecessary for -20°C storage

For technical support and original validation data for this product please contact:

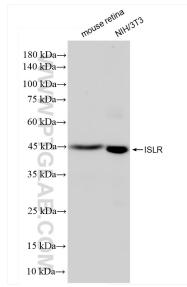
T: 4006900926

E: Proteintech-CN@ptglab.com

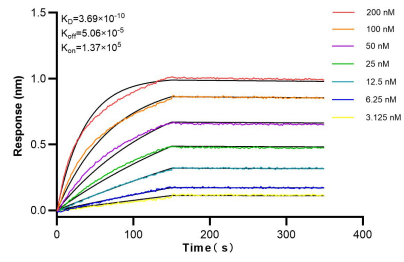
W: ptgcn.com

This product is exclusively available under Proteintech Group brand and is not available to purchase from any other manufacturer.

## Selected Validation Data



Various lysates were subjected to SDS PAGE followed by western blot with 83782-5-RR (ISLR antibody) at dilution of 1:1000 incubated at room temperature for 1.5 hours.



Biolayer interferometry (BLI) kinetic assays of 83782-5-RR against Human ISLR were performed. The affinity constant is 0.369 nM.