

For Research Use Only

# HIF2 $\alpha$ /EPAS1 Recombinant antibody, PBS Only (Detector)

Catalog Number:83790-5-PBS



## Basic Information

Catalog Number: 83790-5-PBS	GenBank Accession Number: BC051338	Purification Method: Protein A purification
Size: 1 mg/ml	GeneID (NCBI): 2034	CloneNo.: 240736C9
Source: Rabbit	UNIPROT ID: Q99814	
Isotype: IgG	Full Name: endothelial PAS domain protein 1	
Immunogen Catalog Number: AG15199	Calculated MW: 96 kDa	

## Applications

**Tested Applications:**  
Sandwich ELISA, Indirect ELISA, Sample test

**Species Specificity:**  
human

## Background Information

### Storage

**Storage:**  
Store at -80°C.  
**The product is shipped with ice packs. Upon receipt, store it immediately at -80°C**

**Storage Buffer:**  
PBS Only

For technical support and original validation data for this product please contact:

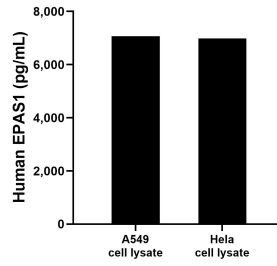
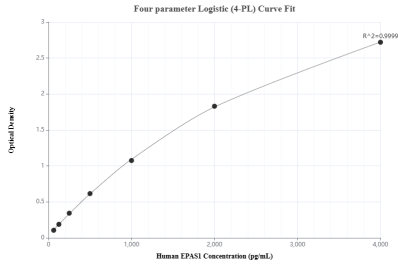
T: 4006900926

E: [Proteintech-CN@ptglab.com](mailto:Proteintech-CN@ptglab.com)

W: [ptgcn.com](http://ptgcn.com)

**This product is exclusively available under Proteintech Group brand and is not available to purchase from any other manufacturer.**

## Selected Validation Data



Sandwich ELISA standard curve of MP00775-4, Human EPAS1 Recombinant Matched Antibody Pair - PBS only. 83790-4-PBS was coated to a plate as the capture antibody and incubated with serial dilutions of standard Ag15199. 83790-5-PBS was HRP conjugated as the detection antibody. Range: 62.5-4000 pg/mL

A549 and HeLa cell lysates were measured. The human EPAS1 concentration of detected samples was determined to be 7,062.3 pg/mL (based on a 1.00 mg/mL extract load) in A549 cell lysate and 6,988.6 pg/mL (based on a 1.50 mg/mL extract load) in HeLa cell lysate.