

For Research Use Only

# CEBPB Recombinant antibody

Catalog Number:83791-6-RR



## Basic Information

<b>Catalog Number:</b> 83791-6-RR	<b>GenBank Accession Number:</b> BC007538	<b>Purification Method:</b> Protein A purification
<b>Size:</b> 1000 ug/ml	<b>GeneID (NCBI):</b> 1051	<b>CloneNo.:</b> 240836G6
<b>Source:</b> Rabbit	<b>UNIPROT ID:</b> P17676	<b>Recommended Dilutions:</b> WB 1:5000-1:50000 IF/ICC 1:150-1:600
<b>Isotype:</b> IgG	<b>Full Name:</b> CCAAT/enhancer binding protein (C/EBP), beta	
<b>Immunogen Catalog Number:</b> AG20073	<b>Calculated MW:</b> 345 aa, 36 kDa	
	<b>Observed MW:</b> 42 kDa, 46 kDa	

## Applications

<b>Tested Applications:</b> WB, IF/ICC, FC (Intra), ELISA	<b>Positive Controls:</b>
<b>Species Specificity:</b> human	<b>WB :</b> HeLa cells, A549 cells, U-87 MG cells, MKN-45 cells, MDA-MB-231 cells
	<b>IF/ICC :</b> HepG2 cells,

## Background Information

CCAAT/enhancer-binding protein beta (CEBPB), also known as LAP, is a important transcriptional activator in the regulation of genes involved in immune and inflammatory responses. It specifically binds to an IL-1 response element in the IL-6 gene. CEBPb mRNAs possess alternative translation-initiation codons, which result in the formation of truncated forms of the protein. Three variants of CEBPBs have been detected: a 46 kDa full-length liver-enriched transcription-activating protein (LAP1), a 42 kDa LAP2 and a 20 kDa liver-enriched transcription-inhibitory protein (LIP). (PMID:18820298).

## Storage

**Storage:**  
Store at -20°C. Stable for one year after shipment.  
**Storage Buffer:**  
PBS with 0.02% sodium azide and 50% glycerol pH 7.3.  
Aliquoting is unnecessary for -20°C storage

For technical support and original validation data for this product please contact:

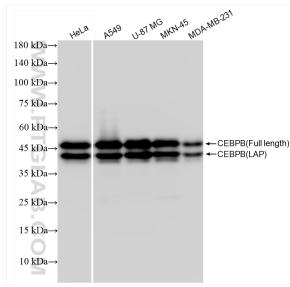
T: 4006900926

E: Proteintech-CN@ptglab.com

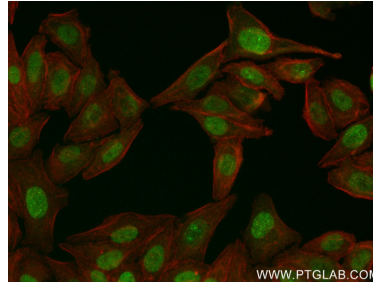
W: ptgcn.com

**This product is exclusively available under Proteintech Group brand and is not available to purchase from any other manufacturer.**

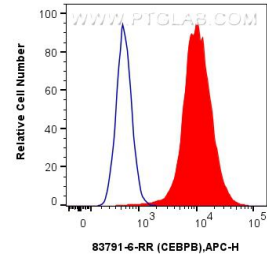
## Selected Validation Data



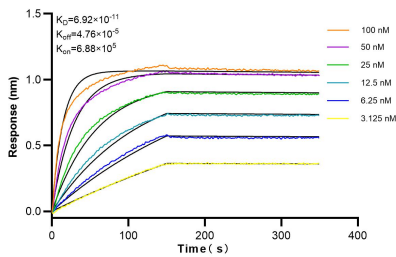
Various lysates were subjected to SDS PAGE followed by western blot with 83791-6-RR (CEBPB antibody) at dilution of 1:10000 incubated at room temperature for 1.5 hours.



Immunofluorescent analysis of (4% PFA) fixed HepG2 cells using CEBPB antibody (83791-6-RR, Clone: 240836G6) at dilution of 1:300 and CoraLite®488-Conjugated AffiniPure Goat Anti-Rabbit IgG(H+L) (SA00013-2), CL594-Phalloidin (red).



1x10<sup>6</sup> HeLa cells were intracellularly stained with 0.25 ug CEBPB Recombinant antibody (83791-6-RR, Clone:240836G6) and APC-Conjugated AffiniPure Goat Anti-Rabbit IgG(H+L)(red), or 0.25 ug Isotype Control (blue). Cells were fixed and permeabilized with True-Nuclear Transcription Factor Buffer Set.



Bi-layer interferometry (BLI) kinetic assays of 83791-6-RR against Human CEBPB were performed. The affinity constant is 69.2 pM.