

For Research Use Only

# GPD1L Recombinant antibody

Catalog Number: 83792-2-RR



## Basic Information

Catalog Number:

83792-2-RR

Size:

1000 ug/ml

Source:

Rabbit

Isotype:

IgG

Immunogen Catalog Number:

AG10977

GenBank Accession Number:

BC028726

GeneID (NCBI):

23171

UNIPROT ID:

Q8N335

Full Name:

glycerol-3-phosphate dehydrogenase

1-like

Calculated MW:

351 aa, 38 kDa

Observed MW:

35-40 kDa

Purification Method:

Protein A purification

CloneNo.:

240846F9

Recommended Dilutions:

WB 1:5000-1:50000

## Applications

Tested Applications:

WB, ELISA

Species Specificity:

human, mouse, rat

Positive Controls:

WB: A549 cells, HepG2 cells, HEK-293 cells, MDA-MB-231 cells, NCI-H1299 cells, mouse heart tissue, rat heart tissue

## Background Information

Glycerol-3-phosphate dehydrogenase 1-like (GPD1L) is encoded by the gene GPD1L, which is located on chromosome 3p22.3. GPD1L is responsible for catalyzing the conversion of sn-glycerol 3-phosphate to glycerone phosphate. GPD1L displayed a dysregulated state in a wide variety of cancers.

## Storage

Storage:

Store at -20°C. Stable for one year after shipment.

Storage Buffer:

PBS with 0.02% sodium azide and 50% glycerol pH 7.3.

Aliquoting is unnecessary for -20°C storage

For technical support and original validation data for this product please contact:

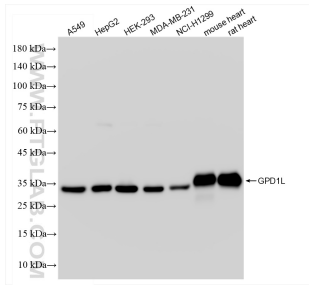
T: 4006900926

E: [Proteintech-CN@ptglab.com](mailto:Proteintech-CN@ptglab.com)

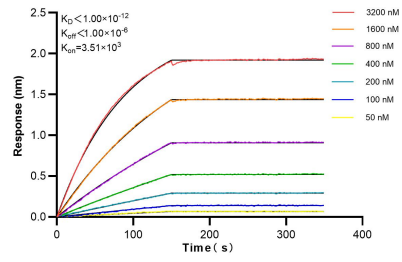
W: [ptgcn.com](http://ptgcn.com)

This product is exclusively available under Proteintech Group brand and is not available to purchase from any other manufacturer.

## Selected Validation Data



Various lysates were subjected to SDS PAGE followed by western blot with 83792-2-RR (GPD1L antibody) at dilution of 1:10000 incubated at room temperature for 1.5 hours.



Biolayer interferometry (BLI) kinetic assays of 83792-2-RR against Human GPD1L were performed. The affinity constant is below 1 pM.