

For Research Use Only

# MITF Recombinant antibody, PBS Only (Detector)

Catalog Number: 83803-2-PBS



## Basic Information

Catalog Number:

83803-2-PBS

Size:

1 mg/ml

Source:

Rabbit

Isotype:

IgG

Immunogen Catalog Number:

AG3679

GenBank Accession Number:

BC012503

GeneID (NCBI):

4286

UNIPROT ID:

O75030

Full Name:

microphthalmia-associated  
transcription factor

Calculated MW:

91 aa, 10 kDa, 59 kDa

Observed MW:

60-65 kDa

Purification Method:

Protein A purification

CloneNo.:

240815E7

## Applications

Tested Applications:

IF/ICC, FC (Intra), Cytometric bead array, Indirect  
ELISA

Species Specificity:

human

## Background Information

The retinal pigment epithelium (RPE) has an essential role in maintaining visual function and dedifferentiation of RPE contributes to the pathophysiology of several ocular diseases (PMID:22523078). Microphthalmia-associated transcription factor (MITF) is a key regulator of RPE differentiation that is also down-regulated in dedifferentiated hRPE cells. MITF is a basic helix-loop-helix (hHLH)-leucine zipper protein that involves in the development of various cell types, including neural crest-derived melanocytes and optic cup-derived retinal pigment epithelial cells (PMID: 10578055).

## Storage

Storage:

Store at -80°C.

**The product is shipped with ice packs. Upon receipt, store it immediately at -80°C**

Storage Buffer:

PBS Only

For technical support and original validation data for this product please contact:

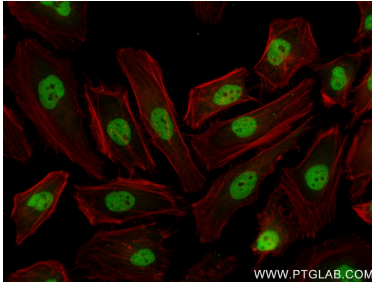
T: 4006900926

E: [Proteintech-CN@ptglab.com](mailto:Proteintech-CN@ptglab.com)

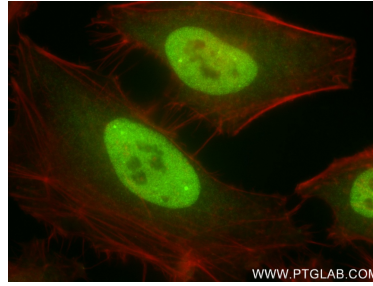
W: [ptgcn.com](http://ptgcn.com)

**This product is exclusively available under Proteintech Group brand and is not available to purchase from any other manufacturer.**

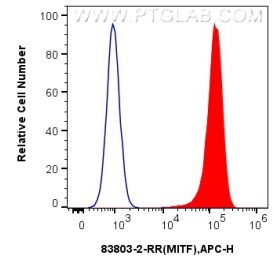
## Selected Validation Data



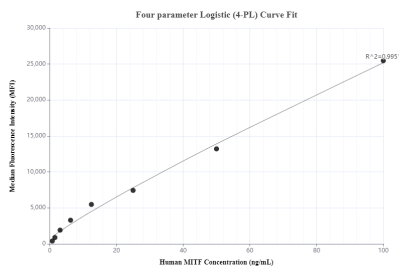
Immunofluorescent analysis of (4% PFA) fixed HeLa cells using MITF antibody (83803-2-RR, Clone: 240815E7) at dilution of 1:400 and CoraLite® 488-Conjugated AffiniPure Goat Anti-Rabbit IgG(H+L) (SA00013-2), CL594-Phalloidin (red). This data was developed using the same antibody clone with 83803-2-PBS in a different storage buffer formulation.



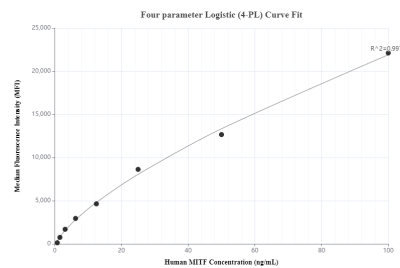
Immunofluorescent analysis of (4% PFA) fixed HeLa cells using MITF antibody (83803-2-RR, Clone: 240815E7) at dilution of 1:400 and CoraLite® 488-Conjugated AffiniPure Goat Anti-Rabbit IgG(H+L) (SA00013-2), CL594-Phalloidin (red). This data was developed using the same antibody clone with 83803-2-PBS in a different storage buffer formulation.



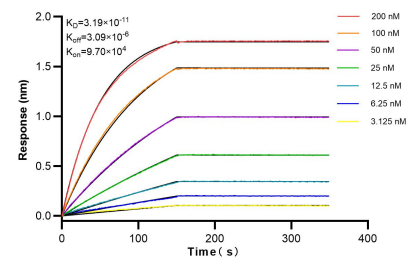
$1 \times 10^6$  HeLa cells were intracellularly stained with 0.25  $\mu$ g MITF Recombinant antibody (83803-2-RR, Clone: 240815E7) and APC-Conjugated AffiniPure Goat Anti-Rabbit IgG(H+L)(red), or 0.25  $\mu$ g Isotype Control (blue). Cells were fixed and permeabilized with Transcription Factor Staining Buffer Kit (PF00011). This data was developed using the same antibody clone with 83803-2-PBS in a different storage buffer formulation.



Cytometric bead array standard curve of MP00746-1, MITF Recombinant Matched Antibody Pair, PBS Only. Capture antibody: 83803-1-PBS. Detection antibody: 83803-2-PBS. Standard: Ag3679. Range: 0.781-100 ng/mL.



Cytometric bead array standard curve of MP00746-3, MITF Recombinant Matched Antibody Pair, PBS Only. Capture antibody: 83803-3-PBS. Detection antibody: 83803-2-PBS. Standard: Ag3679. Range: 0.781-100 ng/mL.



Bi-layer interferometry (BLI) kinetic assays of 83803-2-RR against Human MITF were performed. The affinity constant is 31.9 pM.