

For Research Use Only

# TBX21, T-bet Recombinant antibody, PBS Only (Capture)

Catalog Number: 83804-4-PBS



## Basic Information

|  |  |   |
|--|--|---|
| <b>Catalog Number:</b><br>83804-4-PBS      | <b>GenBank Accession Number:</b><br>BC039739 | <b>Purification Method:</b><br>Protein A purification |
| <b>Size:</b><br>1 mg/ml                    | <b>GeneID (NCBI):</b><br>30009               | <b>CloneNo.:</b><br>240849D4                          |
| <b>Source:</b><br>Rabbit                   | <b>ENSEMBL Gene ID:</b><br>ENSG00000073861   |   |
| <b>Isotype:</b><br>IgG                     | <b>UNIPROT ID:</b><br>Q9UL17                 |   |
| <b>Immunogen Catalog Number:</b><br>AG4618 | <b>Full Name:</b><br>T-box 21                |   |
|  | <b>Calculated MW:</b><br>535 aa, 58 kDa      |   |

## Applications

**Tested Applications:**  
Cytometric bead array, Sandwich ELISA, Indirect ELISA, Sample test

**Species Specificity:**  
human

## Background Information

### Storage

**Storage:**  
Store at -80°C.  
**The product is shipped with ice packs. Upon receipt, store it immediately at -80°C**

**Storage Buffer:**  
PBS Only

For technical support and original validation data for this product please contact:

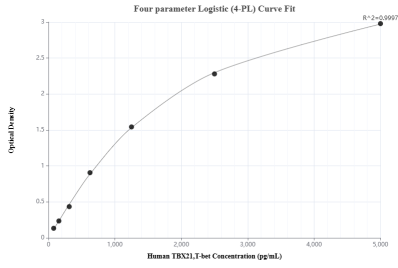
T: 4006900926

E: Proteintech-CN@ptglab.com

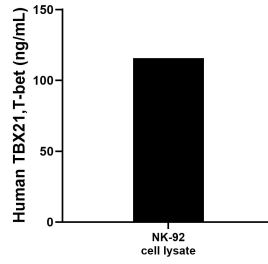
W: ptgcn.com

**This product is exclusively available under Proteintech Group brand and is not available to purchase from any other manufacturer.**

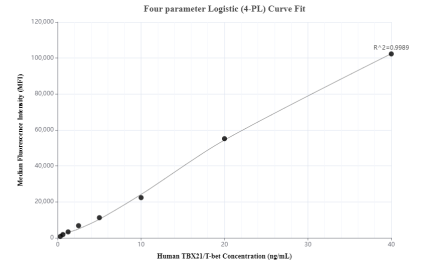
## Selected Validation Data



Sandwich ELISA standard curve of MP00748-1, Human TBX21,T-bet Recombinant Matched Antibody Pair - PBS only. 83804-4-PBS was coated to a plate as the capture antibody and incubated with serial dilutions of standard Ag4618. 83804-5-PBS was HRP conjugated as the detection antibody. Range: 78.1-5000 pg/mL



NK-92 cell lysate was measured. The human TBX21,T-bet concentration of detected samples was determined to be 115.64 ng/mL (based on a 1.5 mg/mL extract load).



Cytometric bead array standard curve of MP00748-1, TBX21,T-bet Recombinant Matched Antibody Pair, PBS Only. Capture antibody: 83804-4-PBS. Detection antibody: 83804-5-PBS. Standard: Ag4618. Range: 0.313-40 ng/mL