

For Research Use Only

# TBX21, T-bet Recombinant antibody, PBS Only (Detector)

Catalog Number: 83804-5-PBS



## Basic Information

Catalog Number:

83804-5-PBS

Size:

1 mg/ml

Source:

Rabbit

Isotype:

IgG

Immunogen Catalog Number:

AG4618

GenBank Accession Number:

BC039739

GeneID (NCBI):

30009

ENSEMBL Gene ID:

ENSG00000073861

UNIPROT ID:

Q9UL17

Full Name:

T-box 21

Calculated MW:

535 aa, 58 kDa

Purification Method:

Protein A purification

CloneNo.:

240849E6

## Applications

Tested Applications:

Cytometric bead array, Sandwich ELISA, Indirect ELISA, Sample test

Species Specificity:

human

## Background Information

### Storage

Storage:

Store at -80°C.

**The product is shipped with ice packs. Upon receipt, store it immediately at -80°C**

Storage Buffer:

PBS Only

For technical support and original validation data for this product please contact:

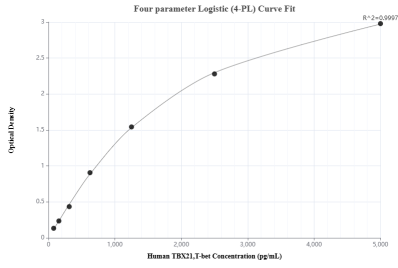
T: 4006900926

E: [Proteintech-CN@ptglab.com](mailto:Proteintech-CN@ptglab.com)

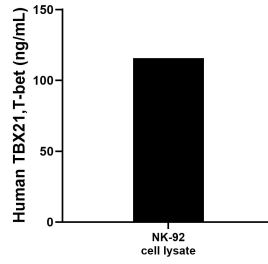
W: [ptgcn.com](http://ptgcn.com)

**This product is exclusively available under Proteintech Group brand and is not available to purchase from any other manufacturer.**

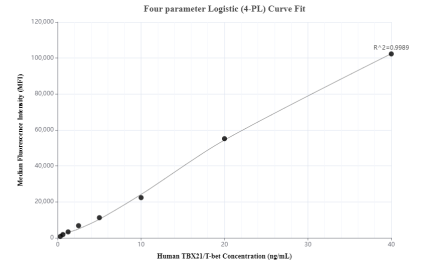
## Selected Validation Data



Sandwich ELISA standard curve of MP00748-1, Human TBX21,T-bet Recombinant Matched Antibody Pair - PBS only. 83804-4-PBS was coated to a plate as the capture antibody and incubated with serial dilutions of standard Ag4618. 83804-5-PBS was HRP conjugated as the detection antibody. Range: 78.1-5000 pg/mL



NK-92 cell lysate was measured. The human TBX21,T-bet concentration of detected samples was determined to be 115.64 ng/mL (based on a 1.5 mg/mL extract load).



Cytometric bead array standard curve of MP00748-1, TBX21,T-bet Recombinant Matched Antibody Pair, PBS Only. Capture antibody: 83804-4-PBS. Detection antibody: 83804-5-PBS. Standard: Ag4618. Range: 0.313-40 ng/mL