

For Research Use Only

GATA3 Recombinant antibody, PBS Only (Capture/Detector)

Catalog Number:83808-4-PBS



Basic Information

Catalog Number: 83808-4-PBS	GenBank Accession Number: BC003070	Purification Method: Protein A purification
Concentration: 1 mg/ml	GeneID (NCBI): 2625	CloneNo.: 240684F5
Source: Rabbit	UNIPROT ID: P23771	
Isotype: IgG	Full Name: GATA binding protein 3	
Immunogen Catalog Number: AG0174	Calculated MW: 443 aa, 48 kDa	

Applications

Tested Applications:
Cytometric bead array, Sandwich ELISA, Indirect ELISA,
Sample test

Species Specificity:
human

Background Information

Storage

Storage:
Store at -80°C.
The product is shipped with ice packs. Upon receipt, store it immediately at -80°C

Storage Buffer:
PBS Only

For technical support and original validation data for this product please contact:

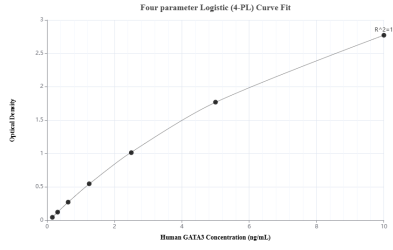
T: 4006900926

E: Proteintech-CN@ptglab.com

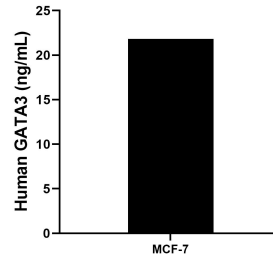
W: ptgcn.com

This product is exclusively available under Proteintech Group brand and is not available to purchase from any other manufacturer.

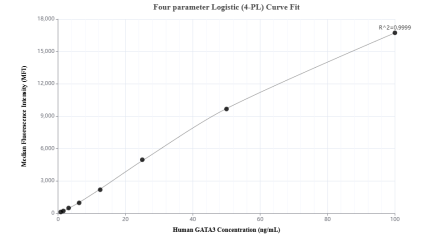
Selected Validation Data



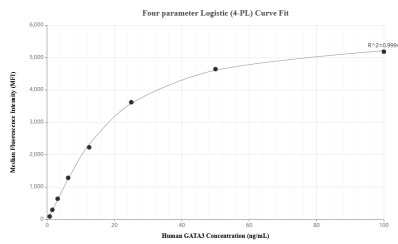
Sandwich ELISA standard curve of MP01933-1, Human GATA3 Recombinant Matched Antibody Pair - PBS only. 83808-1-PBS was coated to a plate as the capture antibody and incubated with serial dilutions of standard Ag0174. 83808-4-PBS was HRP conjugated as the detection antibody. Range: 0.156-10 ng/mL



The mean GATA3 concentration was determined to be 21.82 ng/mL in MCF-7 cell extract based on a 1.3 mg/mL extract load.



Cytometric bead array standard curve of MP01933-1, GATA3 Recombinant Matched Antibody Pair, PBS Only. Capture antibody: 83808-1-PBS. Detection antibody: 83808-4-PBS. Standard: Ag0174. Range: 0.781-100 ng/mL



Cytometric bead array standard curve of MP01933-2, GATA3 Recombinant Matched Antibody Pair, PBS Only. Capture antibody: 83808-4-PBS. Detection antibody: 83808-3-PBS. Standard: Ag0174. Range: 0.781-100 ng/mL