

For Research Use Only

FEM1B Recombinant antibody

Catalog Number:83810-1-RR



Basic Information

Catalog Number:

83810-1-RR

Size:

1000 ug/ml

Source:

Rabbit

Isotype:

IgG

GenBank Accession Number:

NM_015322

GeneID (NCBI):

10116

UNIPROT ID:

Q9UK73

Full Name:

fem-1 homolog b (C. elegans)

Calculated MW:

70 kDa

Purification Method:

Protein A purification

CloneNo.:

240607D8

Recommended Dilutions:

IF/ICC 1:125-1:500

Applications

Tested Applications:

IF/ICC, FC (Intra), ELISA

Species Specificity:

human

Positive Controls:

IF/ICC : PC-3 cells,

Background Information

FEM1B, also named F1AA and KIAA0396, belongs to the fem-1 family. FEM1B is a component of an E3 ubiquitin-protein ligase complex, in which it may act as a substrate recognition subunit. FEM1B is involved in apoptosis by acting as a death receptor-associated protein that mediates apoptosis. It is involved in glucose homeostasis in pancreatic islets.

Storage

Storage:

Store at -20°C. Stable for one year after shipment.

Storage Buffer:

PBS with 0.02% sodium azide and 50% glycerol pH 7.3.

Aliquoting is unnecessary for -20°C storage

For technical support and original validation data for this product please contact:

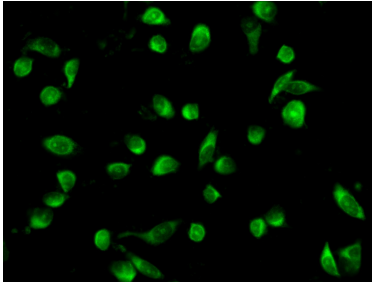
T: 4006900926

E: Proteintech-CN@ptglab.com

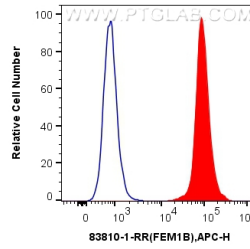
W: ptgcn.com

This product is exclusively available under Proteintech Group brand and is not available to purchase from any other manufacturer.

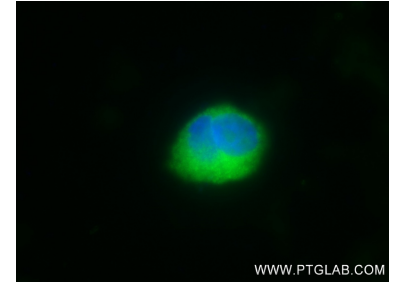
Selected Validation Data



Immunofluorescent analysis of (4% PFA) fixed PC-3 cells using FEM1B antibody (83810-1-RR, Clone: 240607D8) at dilution of 1:250 and CoraLite®488-Conjugated AffiniPure Goat Anti-Rabbit IgG(H+L) (SA00013-2).



1x10⁶ A431 cells were intracellularly stained with 0.25 ug FEM1B Recombinant antibody (83810-1-RR, Clone:240607D8) and APC-Conjugated AffiniPure Goat Anti-Rabbit IgG(H+L)(red), or 0.25 ug Isotype Control (blue). Cells were fixed and permeabilized with Transcription Factor Staining Buffer Kit (PF00011).



Immunofluorescent analysis of (4% PFA) fixed PC-3 cells using FEM1B antibody (83810-1-RR, Clone: 240607D8) at dilution of 1:250 and CoraLite®488-Conjugated AffiniPure Goat Anti-Rabbit IgG(H+L) (SA00013-2).