

For Research Use Only

# SLC18A3 Recombinant antibody, PBS Only (Detector)



Catalog Number: 83819-1-PBS

## Basic Information

<b>Catalog Number:</b> 83819-1-PBS	<b>GenBank Accession Number:</b> BC007765	<b>Purification Method:</b> Protein A purification
<b>Size:</b> 1 mg/ml	<b>GeneID (NCBI):</b> 6572	<b>CloneNo.:</b> 240687C11
<b>Source:</b> Rabbit	<b>UNIPROT ID:</b> Q16572	
<b>Isotype:</b> IgG	<b>Full Name:</b> solute carrier family 18 (vesicular acetylcholine), member 3	
<b>Immunogen Catalog Number:</b> AG25153	<b>Calculated MW:</b> 532 aa, 57 kDa	

## Applications

**Tested Applications:**  
Cytometric bead array, Indirect ELISA

**Species Specificity:**  
human

## Background Information

### Storage

**Storage:**  
Store at -80°C.  
**The product is shipped with ice packs. Upon receipt, store it immediately at -80°C**

**Storage Buffer:**  
PBS Only

For technical support and original validation data for this product please contact:

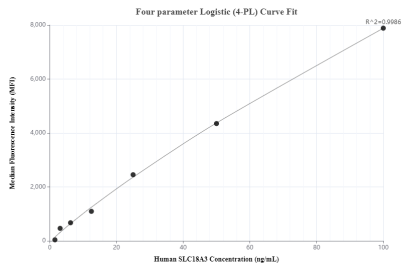
T: 4006900926

E: [Proteintech-CN@ptglab.com](mailto:Proteintech-CN@ptglab.com)

W: [ptgcn.com](http://ptgcn.com)

**This product is exclusively available under Proteintech Group brand and is not available to purchase from any other manufacturer.**

## Selected Validation Data



Cytometric bead array standard curve of MP00780-2, SLC18A3 Recombinant Matched Antibody Pair, PBS Only. Capture antibody: 83819-2-PBS. Detection antibody: 83819-1-PBS. Standard: Ag25153. Range: 1.563-100 ng/mL