

For Research Use Only

COPS3 Recombinant antibody, PBS Only (Detector)

Catalog Number: 83822-2-PBS



Basic Information

Catalog Number: 83822-2-PBS	GenBank Accession Number: BC001891	Purification Method: Protein A purification
Size: 1 mg/ml	GeneID (NCBI): 8533	CloneNo.: 240918E3
Source: Rabbit	UNIPROT ID: Q9UNS2	
Isotype: IgG	Full Name: COP9 constitutive photomorphogenic homolog subunit 3 (Arabidopsis)	
Immunogen Catalog Number: AG32825	Calculated MW: 48 kDa	
	Observed MW: 46 kDa	

Applications

Tested Applications:
WB, IHC, IF/ICC, IF-P, Cytometric bead array, Indirect
ELISA

Species Specificity:
human, mouse, rat

Background Information

COPS3 possesses kinase activity that phosphorylates regulators involved in signal transduction. It phosphorylates I kappa-Balpa, p105, and c-Jun. It acts as a docking site for complex-mediated phosphorylation. The gene is located within the Smith-Magenis syndrome region on chromosome 17.

Storage

Storage:
Store at -80°C.
The product is shipped with ice packs. Upon receipt, store it immediately at -80°C

Storage Buffer:
PBS Only

For technical support and original validation data for this product please contact:

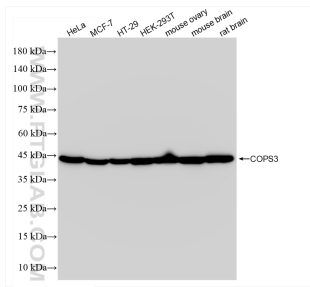
T: 4006900926

E: Proteintech-CN@ptglab.com

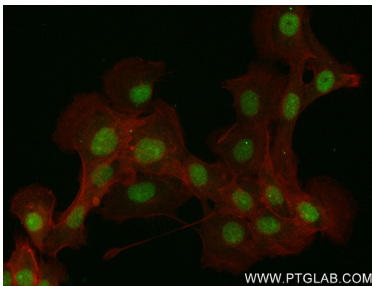
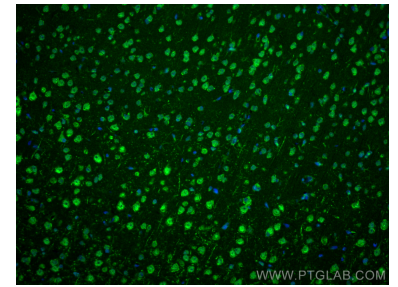
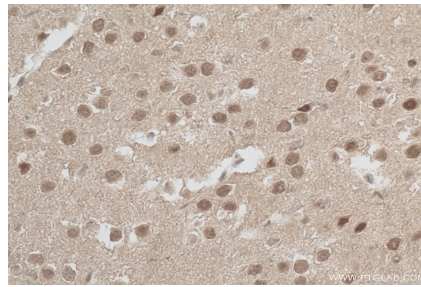
W: ptgcn.com

This product is exclusively available under Proteintech Group brand and is not available to purchase from any other manufacturer.

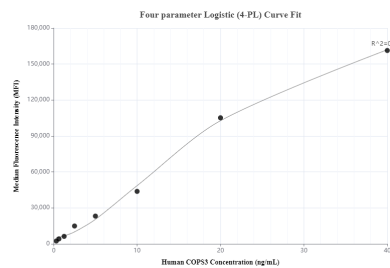
Selected Validation Data



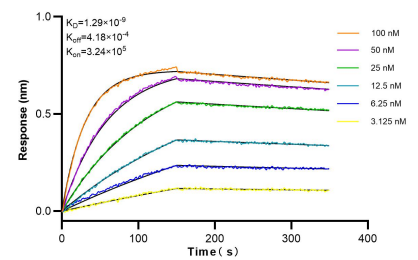
Various lysates were subjected to SDS PAGE followed by western blot with 83822-2-RR (COPS3 antibody) at dilution of 1:10000 incubated at room temperature for 1.5 hours. This data was developed using the same antibody clone with 83822-2-PBS in a different storage buffer formulation.



Immunofluorescent analysis of (4% PFA) fixed A431 cells using COPS3 antibody (83822-2-RR, Clone: 240918E3) at dilution of 1:300 and CoraLite®488-Conjugated AffiniPure Goat Anti-Rabbit IgG(H+L) (SA00013-2), CL594-Phalloidin (red). This data was developed using the same antibody clone with 83822-2-PBS in a different storage buffer formulation.



Cytometric bead array standard curve of MP00797-1, COPS3 Recombinant Matched Antibody Pair, PBS Only. Capture antibody: 83822-4-PBS. Detection antibody: 83822-2-PBS. Standard: Ag32825. Range: 0.313-40 ng/mL.



Biolayer interferometry (BLI) kinetic assays of 83822-2-RR against Human COPS3 were performed. The affinity constant is 1.29 nM.