

For Research Use Only

COPS3 Recombinant antibody

Catalog Number:83822-2-RR



Basic Information

Catalog Number: 83822-2-RR	GenBank Accession Number: BC001891	Purification Method: Protein A purification
Size: 1000 ug/ml	GeneID (NCBI): 8533	CloneNo.: 240918E3
Source: Rabbit	UNIPROT ID: Q9UNS2	Recommended Dilutions: WB 1:5000-1:50000 IHC 1:50-1:500 IF-P 1:250-1:1000 IF/ICC 1:150-1:600
Isotype: IgG	Full Name: COP9 constitutive photomorphogenic homolog subunit 3 (Arabidopsis)	
Immunogen Catalog Number: AG32825	Calculated MW: 48 kDa	
	Observed MW: 46 kDa	

Applications

Tested Applications:
WB, IHC, IF/ICC, IF-P, ELISA

Species Specificity:
human, mouse, rat

Note-IHC: suggested antigen retrieval with TE buffer pH 9.0; (*) Alternatively, antigen retrieval may be performed with citrate buffer pH 6.0

Positive Controls:

WB : HeLa cells, MCF-7 cells, HT-29 cells, HEK-293T cells, mouse ovary tissue, mouse brain tissue, rat brain tissue

IHC : mouse brain tissue,

IF-P : rat brain tissue,

IF/ICC : A431 cells, HeLa cells

Background Information

COPS3 possesses kinase activity that phosphorylates regulators involved in signal transduction. It phosphorylates I kappa-Balpa, p105, and c-Jun. It acts as a docking site for complex-mediated phosphorylation. The gene is located within the Smith-Magenis syndrome region on chromosome 17.

Storage

Storage:
Store at -20°C. Stable for one year after shipment.
Storage Buffer:
PBS with 0.02% sodium azide and 50% glycerol pH 7.3.
Aliquoting is unnecessary for -20°C storage

For technical support and original validation data for this product please contact:

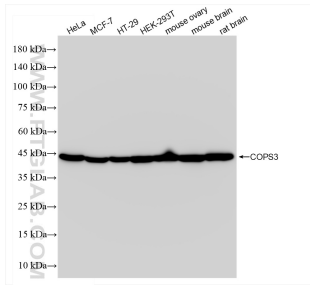
T: 4006900926

E: Proteintech-CN@ptglab.com

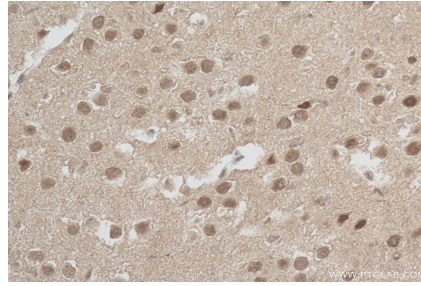
W: ptgcn.com

This product is exclusively available under Proteintech Group brand and is not available to purchase from any other manufacturer.

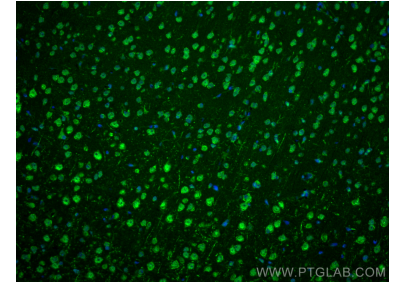
Selected Validation Data



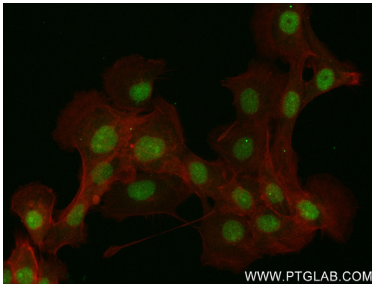
Various lysates were subjected to SDS PAGE followed by western blot with 83822-2-RR (COPS3 antibody) at dilution of 1:10000 incubated at room temperature for 1.5 hours.



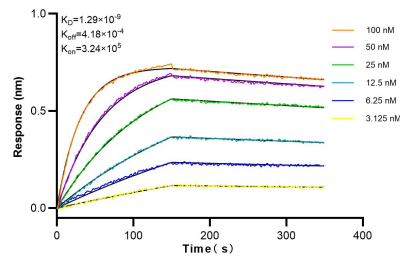
Immunohistochemical analysis of paraffin-embedded mouse brain tissue slide using 83822-2-RR (COPS3 antibody) at dilution of 1:200 (under 40x lens). Heat mediated antigen retrieval with Tris-EDTA buffer (pH 9.0).



Immunofluorescent analysis of (4% PFA) fixed paraffin-embedded rat brain tissue using COPS3 antibody (83822-2-RR, Clone: 240918E3) at dilution of 1:500 and Multi-rAb CoraLite® Plus 488-Goat Anti-Rabbit Recombinant Secondary Antibody (H+L) (RGAR002). Heat mediated antigen retrieval with Tris-EDTA buffer (pH 9.0).



Immunofluorescent analysis of (4% PFA) fixed A431 cells using COPS3 antibody (83822-2-RR, Clone: 240918E3) at dilution of 1:300 and CoraLite®488-Conjugated AffiniPure Goat Anti-Rabbit IgG(H+L) (SA00013-2), CL594-Phalloidin (red).



Biolayer interferometry (BLI) kinetic assays of 83822-2-RR against Human COPS3 were performed. The affinity constant is 1.29 nM.