

For Research Use Only

ATP2B1 Recombinant antibody, PBS Only (Capture/Detector)

Catalog Number:83827-2-PBS



Basic Information

Catalog Number: 83827-2-PBS	GenBank Accession Number: NM_001001323.1	Purification Method: Protein A purification
Size: 1 mg/ml	GeneID (NCBI): 490	CloneNo.: 240848D2
Source: Rabbit	UNIPROT ID: P20020	
Isotype: IgG	Full Name: ATPase, Ca ⁺⁺ transporting, plasma membrane 1	
Immunogen Catalog Number: AG32423	Calculated MW: 135 kDa	

Applications

Tested Applications:
Cytometric bead array, Sandwich ELISA, Indirect ELISA, Sample test

Species Specificity:
human

Background Information

Storage

Storage:
Store at -80°C.
The product is shipped with ice packs. Upon receipt, store it immediately at -80°C

Storage Buffer:
PBS Only

For technical support and original validation data for this product please contact:

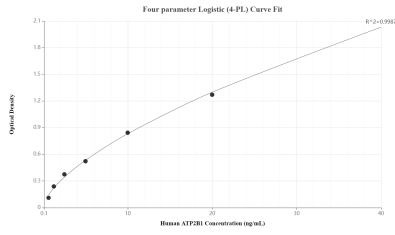
T: 4006900926

E: Proteintech-CN@ptglab.com

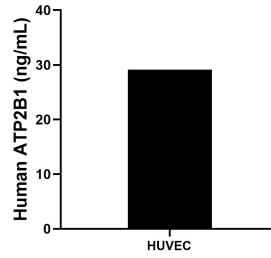
W: ptgcn.com

This product is exclusively available under Proteintech Group brand and is not available to purchase from any other manufacturer.

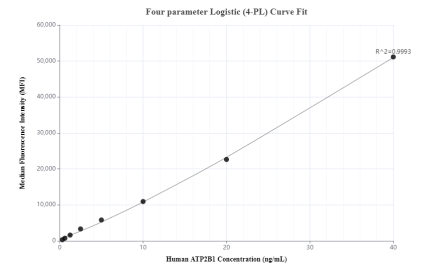
Selected Validation Data



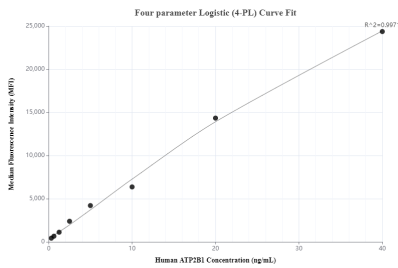
Sandwich ELISA standard curve of MP00808-3, Human ATP2B1 Recombinant Matched Antibody Pair - PBS only. 83827-2-PBS was coated to a plate as the capture antibody and incubated with serial dilutions of standard Ag32423. 83827-5-PBS was HRP conjugated as the detection antibody. Range: 0.625-40 ng/mL.



The mean ATP2B1 concentration was determined to be 29.13 ng/mL in HUVEC cell extract based on a 0.91 mg/mL extract load.



Cytometric bead array standard curve of MP00808-1, ATP2B1 Recombinant Matched Antibody Pair, PBS Only. Capture antibody: 83827-3-PBS. Detection antibody: 83827-2-PBS. Standard: Ag32423. Range: 0.313-40 ng/mL.



Cytometric bead array standard curve of MP00808-2, ATP2B1 Recombinant Matched Antibody Pair, PBS Only. Capture antibody: 83827-1-PBS. Detection antibody: 83827-2-PBS. Standard: Ag32423. Range: 0.313-40 ng/mL.