

For Research Use Only

# PTPRS Recombinant antibody, PBS Only (Capture/Detector)

Catalog Number:83833-1-PBS



## Basic Information

<b>Catalog Number:</b> 83833-1-PBS	<b>GenBank Accession Number:</b> NM_002850	<b>Purification Method:</b> Protein A purification
<b>Size:</b> 1 mg/ml	<b>GeneID (NCBI):</b> 5802	<b>CloneNo.:</b> 241005C4
<b>Source:</b> Rabbit	<b>UNIPROT ID:</b> Q13332	
<b>Isotype:</b> IgG	<b>Full Name:</b> protein tyrosine phosphatase, receptor type, S	
	<b>Calculated MW:</b> 217 kDa	

## Applications

**Tested Applications:**  
Cytometric bead array, Sandwich ELISA, Indirect ELISA,  
Sample test

**Species Specificity:**  
human

## Background Information

### Storage

**Storage:**  
Store at -80°C.  
**The product is shipped with ice packs. Upon receipt, store it immediately at -80°C**

**Storage Buffer:**  
PBS Only

For technical support and original validation data for this product please contact:

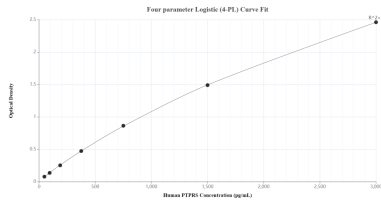
T: 4006900926

E: [Proteintech-CN@ptglab.com](mailto:Proteintech-CN@ptglab.com)

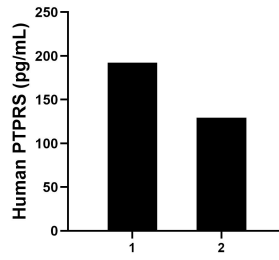
W: [ptgcn.com](http://ptgcn.com)

**This product is exclusively available under Proteintech Group brand and is not available to purchase from any other manufacturer.**

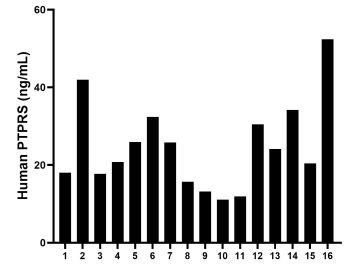
## Selected Validation Data



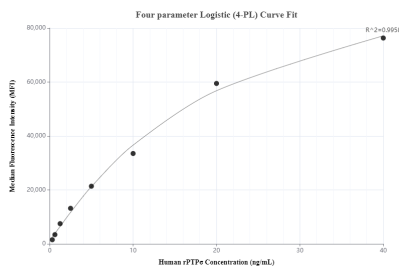
Sandwich ELISA standard curve of MP00820-4, Human PTPRS Recombinant Matched Antibody Pair - PBS only. 83833-4-PBS was coated to a plate as the capture antibody and incubated with serial dilutions of standard Eg0576. 83833-1-PBS was HRP conjugated as the detection antibody. Range: 46.8-3000 pg/mL



Cerebrospinal fluid of two individual human donors was measured. The PTPRS concentration of detected samples was determined to be 192.2 pg/mL and 129.3 pg/mL, respectively.



Serum of sixteen individual healthy human donors was measured. The PTPRS concentration of detected samples was determined to be 24.8 ng/mL with a range of 15.7 - 42.0 ng/mL



Cytometric bead array standard curve of MP00820-2, rPTPα Recombinant Matched Antibody Pair, PBS Only. Capture antibody: 83833-1-PBS. Detection antibody: 83833-4-PBS. Standard: Eg0576. Range: 0.313-40 ng/mL