

For Research Use Only

PTPRS Recombinant antibody, PBS Only (Capture/Detector)

Catalog Number:83833-4-PBS



Basic Information

Catalog Number: 83833-4-PBS	GenBank Accession Number: NM_002850	Purification Method: Protein A purification
Size: 1 mg/ml	GeneID (NCBI): 5802	CloneNo.: 241005H7
Source: Rabbit	UNIPROT ID: Q13332	
Isotype: IgG	Full Name: protein tyrosine phosphatase, receptor type, S	
	Calculated MW: 217 kDa	

Applications

Tested Applications:
Cytometric bead array, Sandwich ELISA, Indirect ELISA,
Sample test

Species Specificity:
human

Background Information

Storage

Storage:
Store at -80°C.
The product is shipped with ice packs. Upon receipt, store it immediately at -80°C

Storage Buffer:
PBS Only

For technical support and original validation data for this product please contact:

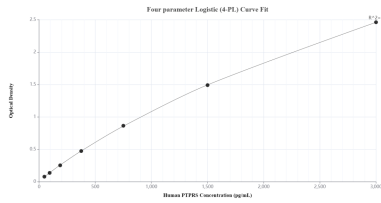
T: 4006900926

E: Proteintech-CN@ptglab.com

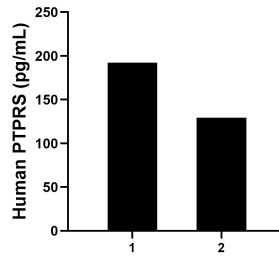
W: ptgcn.com

This product is exclusively available under Proteintech Group brand and is not available to purchase from any other manufacturer.

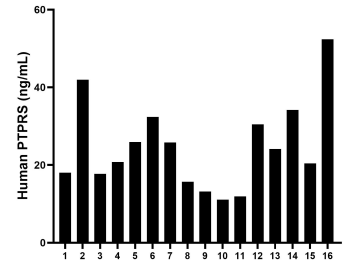
Selected Validation Data



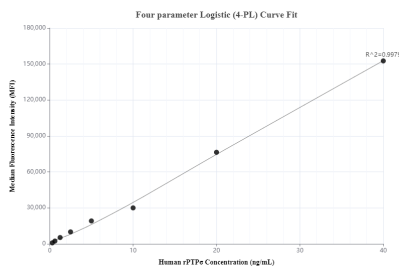
Sandwich ELISA standard curve of MP00820-4, Human PTPRS Recombinant Matched Antibody Pair - PBS only. 83833-4-PBS was coated to a plate as the capture antibody and incubated with serial dilutions of standard Eg0576. 83833-1-PBS was HRP conjugated as the detection antibody. Range: 46.8-3000 pg/mL



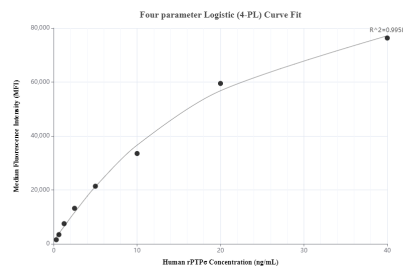
Cerebrospinal fluid of two individual human donors was measured. The PTPRS concentration of detected samples was determined to be 192.2 pg/mL and 129.3 pg/mL, respectively.



Serum of sixteen individual healthy human donors was measured. The PTPRS concentration of detected samples was determined to be 24.8 ng/mL with a range of 15.7 - 42.0 ng/mL



Cytometric bead array standard curve of MP00820-1, rPTP α Recombinant Matched Antibody Pair, PBS Only. Capture antibody: 83833-4-PBS. Detection antibody: 83833-3-PBS. Standard: Eg0576. Range: 0.313-40 ng/mL



Cytometric bead array standard curve of MP00820-2, rPTP α Recombinant Matched Antibody Pair, PBS Only. Capture antibody: 83833-1-PBS. Detection antibody: 83833-4-PBS. Standard: Eg0576. Range: 0.313-40 ng/mL