

For Research Use Only

FBN1 Recombinant antibody, PBS Only (Detector)

Catalog Number: 83836-1-PBS



Basic Information

Catalog Number: 83836-1-PBS	GenBank Accession Number: BC146854	Purification Method: Protein A purification
Size: 1 mg/ml	GeneID (NCBI): 2200	CloneNo.: 240960E5
Source: Rabbit	UNIPROT ID: P35555	
Isotype: IgG	Full Name: fibrillin 1	
Immunogen Catalog Number: AG30283		

Applications

Tested Applications:
Cytometric bead array, Sandwich ELISA, Indirect ELISA,
Sample test

Species Specificity:
human

Background Information

Storage

Storage:
Store at -80°C.
The product is shipped with ice packs. Upon receipt, store it immediately at -80°C

Storage Buffer:
PBS Only

For technical support and original validation data for this product please contact:

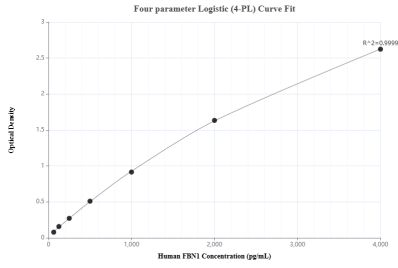
T: 4006900926

E: Proteintech-CN@ptglab.com

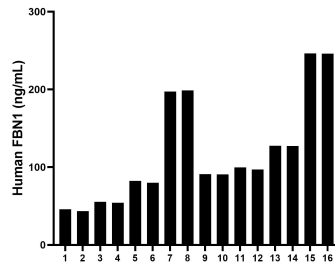
W: ptgcn.com

This product is exclusively available under Proteintech Group brand and is not available to purchase from any other manufacturer.

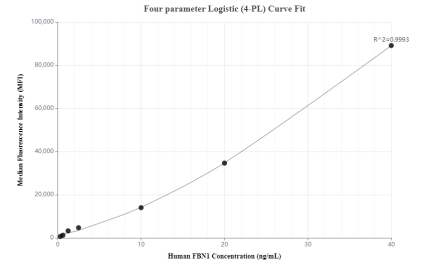
Selected Validation Data



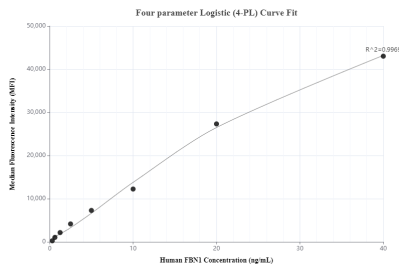
Sandwich ELISA standard curve of MP00807-1, Human FBN1 Recombinant Matched Antibody Pair - PBS only. 83836-2-PBS was coated to a plate as the capture antibody and incubated with serial dilutions of standard Ag30283. 83836-1-PBS was HRP conjugated as the detection antibody. Range: 62.5-4000 pg/mL



Serum of sixteen individual healthy human donors was measured. The human FBN1 concentration of detected samples was determined to be 117.73 ng/mL with a range of 43.48 - 246.44 ng/mL



Cytometric bead array standard curve of MP00807-1, Fibrillin 1 Recombinant Matched Antibody Pair, PBS Only. Capture antibody: 83836-2-PBS. Detection antibody: 83836-1-PBS. Standard: Ag30283. Range: 0.313-40 ng/mL



Cytometric bead array standard curve of MP00807-2, Fibrillin 1 Recombinant Matched Antibody Pair, PBS Only. Capture antibody: 83836-3-PBS. Detection antibody: 83836-1-PBS. Standard: Ag30283. Range: 0.313-40 ng/mL