

For Research Use Only

# TFPI Recombinant antibody

Catalog Number: 83838-5-RR



## Basic Information

<b>Catalog Number:</b> 83838-5-RR	<b>GenBank Accession Number:</b> NM_006287.6	<b>Purification Method:</b> Protein A purification
<b>Size:</b> 1000 ug/ml	<b>GeneID (NCBI):</b> 7035	<b>CloneNo.:</b> 240977B1
<b>Source:</b> Rabbit	<b>UNIPROT ID:</b> P10646-1	<b>Recommended Dilutions:</b> WB 1:5000-1:50000 IF/ICC 1:125-1:500
<b>Isotype:</b> IgG	<b>Full Name:</b> tissue factor pathway inhibitor (lipoprotein-associated coagulation inhibitor)	
	<b>Calculated MW:</b> 35 kDa	
	<b>Observed MW:</b> 40 kDa	

## Applications

<b>Tested Applications:</b> WB, IF/ICC, FC (Intra), ELISA	<b>Positive Controls:</b>
<b>Species Specificity:</b> human	<b>WB :</b> HepG2 cells, <b>IF/ICC :</b> HepG2 cells,

## Background Information

Tissue factor pathway inhibitor (TFPI) is a critical anticoagulant protein present in endothelium and platelets. TFPI is produced as two major isoforms in humans, TFPIa and TFPIb that result from alternative splicing. The TFPIb isoform localizes to the endothelium surface where it is a potent inhibitor of tissue factor-factor VIIa complexes that initiate blood coagulation. The TFPIa isoform is present in platelets. TFPI is a Kunitz-type serine protease inhibitor that exerts anticoagulant activity by blocking early procoagulant stimuli. TFPI can enhance anti-thrombotic treatment in sepsis, inflammatory diseases, and cardiovascular diseases.

## Storage

**Storage:**  
Store at -20°C. Stable for one year after shipment.  
**Storage Buffer:**  
PBS with 0.02% sodium azide and 50% glycerol pH 7.3.  
**Aliquoting is unnecessary for -20°C storage**

For technical support and original validation data for this product please contact:

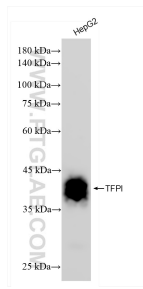
T: 4006900926

E: [Proteintech-CN@ptglab.com](mailto:Proteintech-CN@ptglab.com)

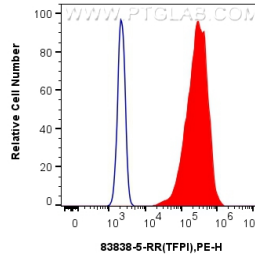
W: [ptgcn.com](http://ptgcn.com)

**This product is exclusively available under Proteintech Group brand and is not available to purchase from any other manufacturer.**

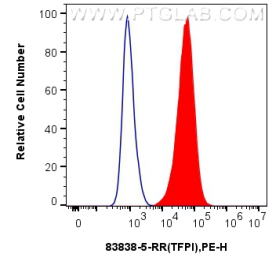
## Selected Validation Data



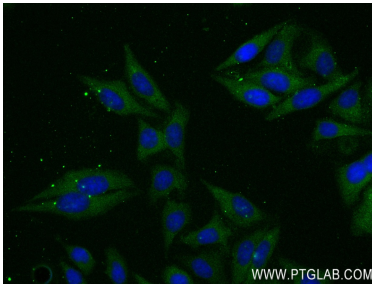
HepG2 cells were subjected to SDS PAGE followed by western blot with 83838-5-RR (TFPI antibody) at dilution of 1:10000 incubated at room temperature for 1.5 hours.



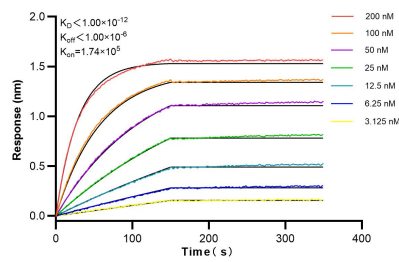
$1 \times 10^6$  HepG2 cells were intracellularly stained with 0.25 ug TFPI Recombinant antibody (83838-5-RR, Clone:240977B1) and PE-Conjugated AffiniPure Goat Anti-Rabbit IgG(H+L)(red), or 0.25 ug Isotype Control (blue). Cells were fixed with 4% PFA and permeabilized with Flow Cytometry Perm Buffer (PF00011-C).



$1 \times 10^6$  HUVEC cells were surface stained with 0.25 ug TFPI Recombinant antibody (83838-5-RR, Clone:240977B1) and PE-Conjugated AffiniPure Goat Anti-Rabbit IgG(H+L)(red), or 0.25 ug Isotype Control (blue). Cells were not fixed.



Immunofluorescent analysis of (-20°C Ethanol) fixed HepG2 cells using TFPI antibody (83838-5-RR, Clone: 240977B1) at dilution of 1:250 and CoraLite®488-Conjugated AffiniPure Goat Anti-Rabbit IgG(H+L) (SA00013-2).



Biolayer interferometry (BLI) kinetic assays of 83838-5-RR against Human TFPI were performed. The affinity constant is below 1 pM.