

For Research Use Only

SMAD2 Recombinant antibody, PBS Only (Capture)

Catalog Number:83841-2-PBS



Basic Information

Catalog Number: 83841-2-PBS	GenBank Accession Number: BC014840	Purification Method: Protein A purification
Size: 1 mg/ml	GeneID (NCBI): 4087	CloneNo.: 240950G3
Source: Rabbit	UNIPROT ID: Q15796	
Isotype: IgG	Full Name: SMAD family member 2	
Immunogen Catalog Number: AG3237	Calculated MW: 467 aa, 52 kDa	

Applications

Tested Applications:
Cytometric bead array, Sandwich ELISA, Indirect ELISA,
Sample test

Species Specificity:
human

Background Information

Storage

Storage:
Store at -80°C.
The product is shipped with ice packs. Upon receipt, store it immediately at -80°C

Storage Buffer:
PBS Only

For technical support and original validation data for this product please contact:

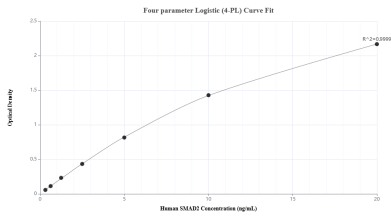
T: 4006900926

E: Proteintech-CN@ptglab.com

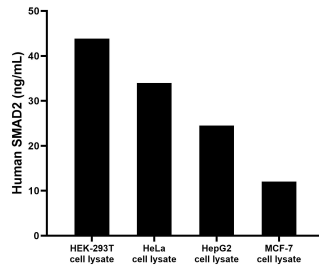
W: ptgcn.com

This product is exclusively available under Proteintech Group brand and is not available to purchase from any other manufacturer.

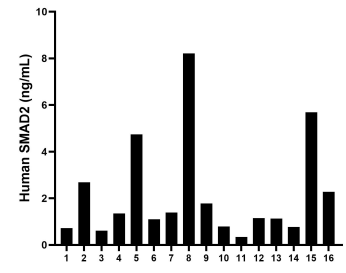
Selected Validation Data



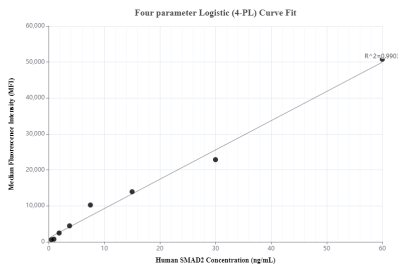
Sandwich ELISA standard curve of MP00791-1, Human SMAD2 Recombinant Matched Antibody Pair - PBS only. 83841-2-PBS was coated to a plate as the capture antibody and incubated with serial dilutions of standard Ag3237. 83841-3-PBS was HRP conjugated as the detection antibody. Range: 0.313-20 ng/mL



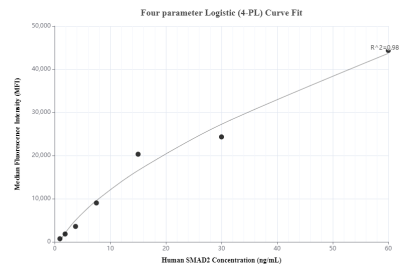
HEK-293T, HeLa, HepG2 and MCF-7 cell lysates were measured. The human SMAD2 concentration of detected samples was determined to be 43.85 ng/mL in HEK-293T cell lysate (based on a 5.5 mg/mL extract load). The human SMAD2 concentration of detected samples was determined to be 33.98 ng/mL in HeLa cell lysate (based on a 7 mg/mL extract load). The human SMAD2 concentration of detected samples was determined to be 24.50 ng/mL in HepG2 cell



Serum of sixteen individual healthy human donors was measured. The human SMAD2 concentration of detected samples was determined to be 2.17 ng/mL with a range of 0.34 - 8.22 ng/mL



Cytometric bead array standard curve of MP00791-1, SMAD2 Recombinant Matched Antibody Pair, PBS Only. Capture antibody: 83841-2-PBS. Detection antibody: 83841-3-PBS. Standard: Ag3237. Range: 0.469-60 ng/mL



Cytometric bead array standard curve of MP00791-3, SMAD2 Recombinant Matched Antibody Pair, PBS Only. Capture antibody: 83841-2-PBS. Detection antibody: 83841-1-PBS. Standard: Ag3237. Range: 0.938-60 ng/mL