

For Research Use Only

# SMAD2 Recombinant antibody, PBS Only (Capture/Detector)

Catalog Number:83841-3-PBS



## Basic Information

<b>Catalog Number:</b> 83841-3-PBS	<b>GenBank Accession Number:</b> BC014840	<b>Purification Method:</b> Protein A purification
<b>Size:</b> 1 mg/ml	<b>GeneID (NCBI):</b> 4087	<b>CloneNo.:</b> 240950G10
<b>Source:</b> Rabbit	<b>UNIPROT ID:</b> Q15796	
<b>Isotype:</b> IgG	<b>Full Name:</b> SMAD family member 2	
<b>Immunogen Catalog Number:</b> AG3237	<b>Calculated MW:</b> 467 aa, 52 kDa	

## Applications

**Tested Applications:**  
Cytometric bead array, Sandwich ELISA, Indirect ELISA,  
Sample test

**Species Specificity:**  
human

## Background Information

### Storage

**Storage:**  
Store at -80°C.  
**The product is shipped with ice packs. Upon receipt, store it immediately at -80°C**

**Storage Buffer:**  
PBS Only

For technical support and original validation data for this product please contact:

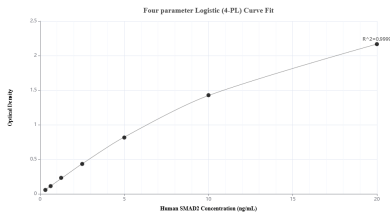
T: 4006900926

E: [Proteintech-CN@ptglab.com](mailto:Proteintech-CN@ptglab.com)

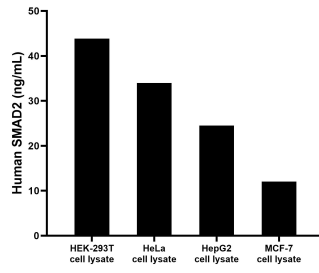
W: [ptgcn.com](http://ptgcn.com)

**This product is exclusively available under Proteintech Group brand and is not available to purchase from any other manufacturer.**

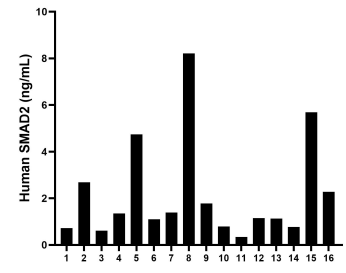
## Selected Validation Data



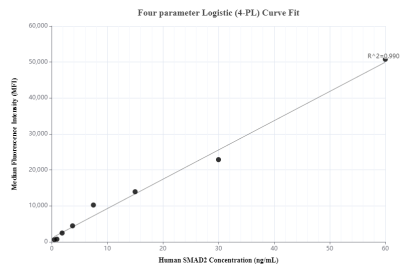
Sandwich ELISA standard curve of MP00791-1, Human SMAD2 Recombinant Matched Antibody Pair - PBS only. 83841-2-PBS was coated to a plate as the capture antibody and incubated with serial dilutions of standard Ag3237. 83841-3-PBS was HRP conjugated as the detection antibody. Range: 0.313-20 ng/mL



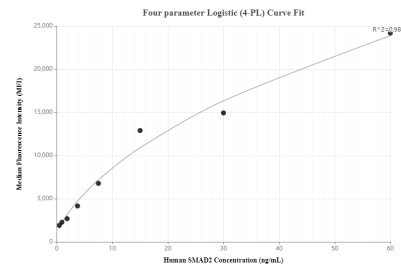
HEK-293T, HeLa, HepG2 and MCF-7 cell lysates were measured. The human SMAD2 concentration of detected samples was determined to be 43.85 ng/mL in HEK-293T cell lysate (based on a 5.5 mg/mL extract load). The human SMAD2 concentration of detected samples was determined to be 33.98 ng/mL in HeLa cell lysate (based on a 7 mg/mL extract load). The human SMAD2 concentration of detected samples was determined to be 24.50 ng/mL in HepG2 cell



Serum of sixteen individual healthy human donors was measured. The human SMAD2 concentration of detected samples was determined to be 2.17 ng/mL with a range of 0.34 - 8.22 ng/mL



Cytometric bead array standard curve of MP00791-1, SMAD2 Recombinant Matched Antibody Pair, PBS Only. Capture antibody: 83841-2-PBS. Detection antibody: 83841-3-PBS. Standard: Ag3237. Range: 0.469-60 ng/mL



Cytometric bead array standard curve of MP00791-2, SMAD2 Recombinant Matched Antibody Pair, PBS Only. Capture antibody: 83841-3-PBS. Detection antibody: 83841-1-PBS. Standard: Ag3237. Range: 0.469-60 ng/mL