

For Research Use Only

# SLC31A1 Recombinant antibody, PBS Only (Capture)



Catalog Number: 83844-2-PBS

## Basic Information

Catalog Number:

83844-2-PBS

Size:

1 mg/ml

Source:

Rabbit

Isotype:

IgG

Immunogen Catalog Number:

AG26601

GenBank Accession Number:

BC013611

GeneID (NCBI):

1317

UNIPROT ID:

O15431

Full Name:

solute carrier family 31 (copper transporters), member 1

Calculated MW:

21 kDa

Purification Method:

Protein A purification

CloneNo.:

240868B5

## Applications

Tested Applications:

Indirect ELISA, Cytometric bead array

Species Specificity:

human

## Background Information

### Storage

Storage:

Store at -80°C.

**The product is shipped with ice packs. Upon receipt, store it immediately at -80°C**

Storage Buffer:

PBS Only

For technical support and original validation data for this product please contact:

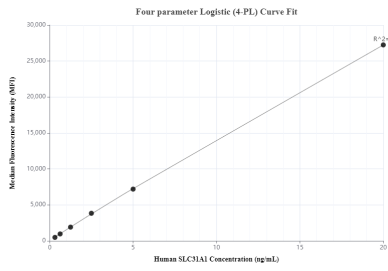
T: 4006900926

E: [Proteintech-CN@ptglab.com](mailto:Proteintech-CN@ptglab.com)

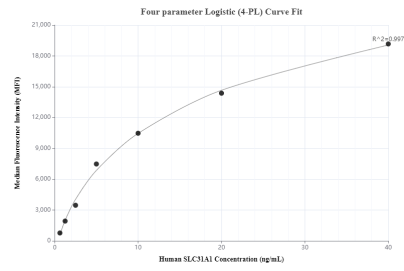
W: [ptgcn.com](http://ptgcn.com)

**This product is exclusively available under Proteintech Group brand and is not available to purchase from any other manufacturer.**

## Selected Validation Data



Cytometric bead array standard curve of MP00817-2, SLC31A1 Recombinant Matched Antibody Pair, PBS Only. Capture antibody: 83844-2-PBS. Detection antibody: 83844-4-PBS. Standard: Ag26601. Range: 0.313-20 ng/mL.



Cytometric bead array standard curve of MP00817-3, SLC31A1 Recombinant Matched Antibody Pair, PBS Only. Capture antibody: 83844-2-PBS. Detection antibody: 83844-1-PBS. Standard: Ag26601. Range: 0.625-40 ng/mL.